

## Recombinant Human CDC34 Protein, GST-Tagged

Cat. No. CDC34-0929H Lot. No. (See product label)

### SPECIFICATION

<b>Product Overview</b>	Human CDC34 full-length ORF (NP_004350.1, 1 a.a. - 236 a.a.) recombinant protein with GST-tag at N-terminal.
<b>Species</b>	Human
<b>Source</b>	Wheat Germ
<b>Description</b>	The protein encoded by this gene is a member of the ubiquitin-conjugating enzyme family. Ubiquitin-conjugating enzyme catalyzes the covalent attachment of ubiquitin to other proteins. This protein is a part of the large multiprotein complex, which is required for ubiquitin-mediated degradation of cell cycle G1 regulators, and for the initiation of DNA replication. [provided by RefSeq, Jul 2008]
<b>Molecular Mass</b>	53.1 kDa
<b>AA Sequence</b>	MARPLVPSSQKALLLELKGLQEPPVEGFRVTLVDEGDLYNWEVAIFGPPNTYYEGG YFKARLKFIDYPYSPPAFRFLTKMWHPNYETGDVCISILHPPVDDPQSGELPSERW NPTQNVRTILLSVISLLNEPNTFSPANVDASVMYRKWKESKSKGDREYTDIIRKQVLGT KVDAERDGVKVPPTLAEYCVKTKAPAPDEGSDLFYDDYYEDGEVEEEEADSCFGDDE DDSGTEES
<b>Applications</b>	Enzyme-linked Immunoabsorbent Assay Western Blot (Recombinant protein) Antibody Production Protein Array

 Tel: 1-631-559-9269 1-516-512-3133

 Email: [info@creative-biomart.com](mailto:info@creative-biomart.com)  Fax: 1-631-938-8127

 45-1 Ramsey Road, Shirley, NY 11967, USA

**Storage** Store at -80 centigrade. Aliquot to avoid repeated freezing and thawing.

**Storage Buffer** 50 mM Tris-HCl, 10 mM reduced Glutathione, pH=8.0 in the elution buffer.

## GENE INFORMATION

**Gene Name** CDC34 cell division cycle 34 homolog (*S. cerevisiae*) [ *Homo sapiens* ]

**Official Symbol** CDC34

**Synonyms**

CDC34; cell division cycle 34 homolog (*S. cerevisiae*); cell division cycle 34; ubiquitin-conjugating enzyme E2 R1; E2 CDC34; UBC3; UBE2R1; ubiquitin carrier protein; ubiquitin-protein ligase R1; ubiquitin-conjugating enzyme E2-CDC34; ubiquitin-conjugating enzyme E2-32 KDA complementing; UBCH3; E2-CDC34;

**Gene ID** 997

**mRNA Refseq** NM\_004359

**Protein Refseq** NP\_004350

**MIM** 116948

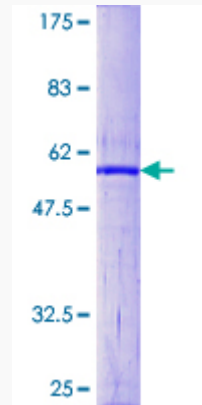
**UniProt ID** P49427

 Tel: 1-631-559-9269 1-516-512-3133

 Email: [info@creative-biomart.com](mailto:info@creative-biomart.com)  Fax: 1-631-938-8127

 45-1 Ramsey Road, Shirley, NY 11967, USA

**Quality Control  
Testing**



12.5% SDS-PAGE Stained with Coomassie Blue.

 Tel: 1-631-559-9269 1-516-512-3133

 Email: [info@creative-biomart.com](mailto:info@creative-biomart.com)  Fax: 1-631-938-8127

 45-1 Ramsey Road, Shirley, NY 11967, USA