

Recombinant Human CDC34 Protein (Met1-Ser236), N-His tagged

Cat. No. CDC34-1517H Lot. No. (See product label)

SPECIFICATION

Product Overview	Recombinant Human CDC34 (Met1-Ser236) fused with the N-His tag was expressed in E. coli.
Species	Human
Source	E.coli
ProteinLength	Met1-Ser236
Form	Lyophilized powder/frozen liquid
Molecular Mass	29.05 kDa
Purity	>90% as determined by SDS-PAGE.
Notes	For research use only.
Storage	Use a manual defrost freezer and avoid repeated freeze thaw cycles. Store at 2 to 8 centigrade for one week. Store at -20 to -80 centigrade for twelve months from the date of receipt.
Storage Buffer	0.01M PBS, pH 7.4, 0.02% NLS
Reconstitution	Reconstitute in sterile water for a stock solution.

 Tel: 1-631-559-9269 1-516-512-3133

 Email: info@creative-biomart.com  Fax: 1-631-938-8127

 45-1 Ramsey Road, Shirley, NY 11967, USA

Shipping

They are shipped out with dry ice/blue ice unless customers require otherwise.

GENE INFORMATION

Gene Name CDC34 cell division cycle 34 homolog (*S. cerevisiae*) [*Homo sapiens* (human)]

Official Symbol CDC34

Synonyms

CDC34; cell division cycle 34 homolog (*S. cerevisiae*); cell division cycle 34; ubiquitin-conjugating enzyme E2 R1; E2 CDC34; UBC3; UBE2R1; ubiquitin carrier protein; ubiquitin-protein ligase R1; ubiquitin-conjugating enzyme E2-CDC34; ubiquitin-conjugating enzyme E2-32 KDA complementing; UBCH3; E2-CDC34;

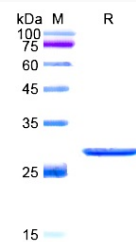
Gene ID 997

mRNA Refseq NM_004359

Protein Refseq NP_004350

MIM 116948

UniProt ID P49427

SDS-PAGE


 Tel: 1-631-559-9269 1-516-512-3133

 Email: info@creative-biomart.com  Fax: 1-631-938-8127

 45-1 Ramsey Road, Shirley, NY 11967, USA