

## Recombinant Human CDC34, His-tagged

Cat. No. CDC34-791H Lot. No. (See product label)

### SPECIFICATION

<b>Product Overview</b>	Recombinant human CDC34 protein, fused to His-tag at N-terminus, was expressed in E.coli and purified by using conventional chromatography techniques. MW =28.9kDa (256aa), confirmed by MALDI-TOF.
<b>Species</b>	Human
<b>Source</b>	E.coli
<b>Description</b>	CDC34 is a member of the ubiquitin-conjugating enzyme family. Ubiquitin-conjugating enzyme catalyzes the covalent attachment of ubiquitin to other proteins. This protein is a part of the large multiprotein complex, which is required for ubiquitin-mediated degradation of cell cycle G1 regulators, and for the initiation of DNA replication. CDC34 is thought to be the structural and functional homolog of <i>Saccharomyces cerevisiae</i> CDC34, which is essential for the G1 to S phase transition.
<b>Sequences Of Amino Acids</b>	MGSSHHHHHH SSGLVPRGSH MARPLVPSSQ KALLLELKGL QEEPVEGFRV TLVDEGDLYN WEVAIFGPPN TTYEGGYFKA RLKFPIDYPY SPPAFRFLTK MWHPNIYETG DVCISILHPP VDDPQSGELP SERWNPTQNV RTILLSVISL LNPNFTFSPA NVDASVMYRK WKESKGDRE YTDIIRKQVL GTKVDAERDG VKVPTTLAEY CVKTKAPAPD EGSDLFYDDY YEDGEVEVEEA DSCFGDDEDD SGTEES
<b>Purity</b>	> 95% by SDS – PAGE.
<b>Form</b>	Liquid. 20mM Tris-HCl buffer (pH8.0) containing 10% glycerol, 1mM DTT, 50mM

 Tel: 1-631-559-9269 1-516-512-3133

 Email: [info@creative-biomart.com](mailto:info@creative-biomart.com)  Fax: 1-631-938-8127

 45-1 Ramsey Road, Shirley, NY 11967, USA



	NaCl.
<b>Concentration</b>	1mg/ml (determined by Bradford assay).
<b>Storage</b>	Can be stored at +4°C short term (1-2 weeks). For long term storage, aliquot and store at -20°C or -70°C. Avoid repeated freezing and thawing cycles.
<b>GENE INFORMATION</b>	
<b>Gene Name</b>	CDC34 cell division cycle 34 homolog ( <i>S. cerevisiae</i> ) [ <i>Homo sapiens</i> ]
<b>Synonyms</b>	CDC34; cell division cycle 34 homolog ( <i>S. cerevisiae</i> ); UBC3; UBCH3; UBE2R1; E2-CDC34; ubiquitin-conjugating enzyme E2 R1; ubiquitin carrier protein; ubiquitin-protein ligase R1; ubiquitin-conjugating enzyme E2-CDC34; ubiquitin-conjugating enzyme E2-32 KDA complementing; EC 6.3.2.19; cell division cycle 34
<b>Gene ID</b>	997
<b>mRNA Refseq</b>	NM_004359
<b>Protein Refseq</b>	NP_004350
<b>MIM</b>	116948
<b>UniProt ID</b>	P49427
<b>Chromosome Location</b>	19p13.3
<b>Pathway</b>	Ubiquitin mediated proteolysis

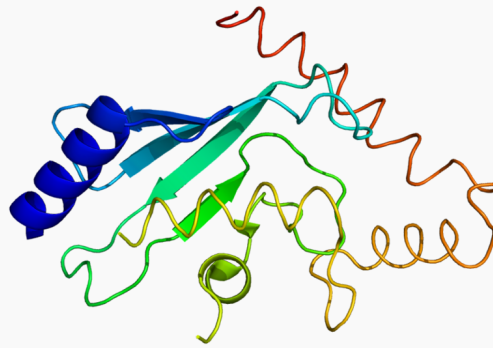
Tel: 1-631-559-9269 1-516-512-3133

Email: [info@creative-biomart.com](mailto:info@creative-biomart.com) Fax: 1-631-938-8127

45-1 Ramsey Road, Shirley, NY 11967, USA

**Function** ATP binding; ligase activity; nucleotide binding; protein binding; ubiquitin-protein ligase activity

**PDB rendering based on 2ob4.**



 Tel: 1-631-559-9269 1-516-512-3133

 Email: [info@creative-biomart.com](mailto:info@creative-biomart.com)  Fax: 1-631-938-8127

 45-1 Ramsey Road, Shirley, NY 11967, USA