

Recombinant Human CDC37 Protein, GST-Tagged

Cat. No. CDC37-0930H Lot. No. (See product label)

SPECIFICATION

Product Overview	Human CDC37 full-length ORF (AAH08793.1, 1 a.a. - 378 a.a.) recombinant protein with GST-tag at N-terminal.
Species	Human
Source	Wheat Germ
Description	The protein encoded by this gene is highly similar to Cdc 37, a cell division cycle control protein of <i>Sacchomyces cerevisiae</i> . This protein is a molecular chaperone with specific function in cell signal transduction. It has been shown to form complex with Hsp90 and a variety of protein kinases including CDK4, CDK6, SRC, RAF-1, MOK, as well as eIF2 alpha kinases. It is thought to play a critical role in directing Hsp90 to its target kinases. [provided by RefSeq, Jul 2008]
Molecular Mass	67.32 kDa
AA Sequence	MMDYSVWDHIEVSDDEDETHPNIDTASLFRWRHQARVERMEQFQKEKEELDRGCR ECKRKVAECQRKLKELEVAEGGKAELERLQAEAQQLRKEERSWEQKLEEMRKKEK SMPWNVDTLKDGFSKSMVNTKPEKTEEDSEEVREQKHKTFFVEKYEQKIKHFGML RRWDDSQKYLSDNVHLVCEETANYLVIWCIDLEVEEKCALMEQVAHQITVMQFILEL AKSLKVDPRACFRQFFTKIKIADRQYMEGFNDELEAFKERVGRAKLRIEKAMKEYE EEERKKRLGPGGLDPVEVYESLPEELQKCFDVKDVQMLQDAISKMDPTDAKYHVQR CIDSGLWVPNSKASEAKEGEEAGPGDPLLEAVPKTGDEKDVSV
Applications	Enzyme-linked Immunoabsorbent Assay

 Tel: 1-631-559-9269 1-516-512-3133

 Email: info@creative-biomart.com  Fax: 1-631-938-8127

 45-1 Ramsey Road, Shirley, NY 11967, USA

Western Blot (Recombinant protein)
 Antibody Production
 Protein Array

Storage Store at -80 centigrade. Aliquot to avoid repeated freezing and thawing.

Storage Buffer 50 mM Tris-HCl, 10 mM reduced Glutathione, pH=8.0 in the elution buffer.

GENE INFORMATION

Gene Name CDC37 cell division cycle 37 homolog (*S. cerevisiae*) [*Homo sapiens*]

Official Symbol CDC37

Synonyms CDC37; cell division cycle 37 homolog (*S. cerevisiae*); CDC37 (cell division cycle 37, *S. cerevisiae*, homolog), CDC37 cell division cycle 37 homolog (*S. cerevisiae*); hsp90 co-chaperone Cdc37; CDC37 (cell division cycle 37; *S. cerevisiae*; homolog); CDC37 cell division cycle 37 homolog; Hsp90 co chaperone Cdc37; P50CDC37; hsp90 chaperone protein kinase-targeting subunit; CDC37 (cell division cycle 37, *S. cerevisiae*, homolog);

Gene ID 11140

mRNA Refseq NM_007065

Protein Refseq NP_008996

MIM 605065

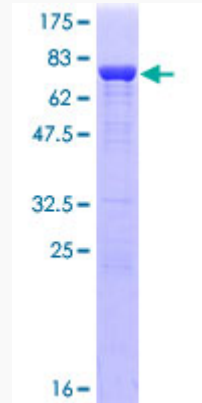
UniProt ID Q16543

 Tel: 1-631-559-9269 1-516-512-3133

 Email: info@creative-biomart.com  Fax: 1-631-938-8127

 45-1 Ramsey Road, Shirley, NY 11967, USA

**Quality Control
Testing**



12.5% SDS-PAGE Stained with Coomassie Blue.

 Tel: 1-631-559-9269 1-516-512-3133

 Email: info@creative-biomart.com  Fax: 1-631-938-8127

 45-1 Ramsey Road, Shirley, NY 11967, USA