

Recombinant Full Length Human CDC37 Protein, C-Flag-tagged

Cat. No. CDC37-2013HFL **Lot. No.** (See product label)

SPECIFICATION

Product Overview	Recombinant Full Length Human CDC37 Protein, fused to Flag-tag at C-terminus, was expressed in Mammalian cells.
Species	Human
Source	Mammalian Cells
Description	The protein encoded by this gene is highly similar to Cdc 37, a cell division cycle control protein of <i>Sacchomyces cerevisiae</i> . This protein is a molecular chaperone with specific function in cell signal transduction. It has been shown to form complex with Hsp90 and a variety of protein kinases including CDK4, CDK6, SRC, RAF-1, MOK, as well as eIF2 alpha kinases. It is thought to play a critical role in directing Hsp90 to its target kinases.
Form	25 mM Tris HCl, pH 7.3, 100 mM glycine, 10% glycerol.
Molecular Mass	44.3 kDa
AA Sequence	MVDYSVWDHIEVSDDEDETHPNIDTASLFRWRHQARVERMEQFQKEKEELDRGCR ECKRKVAECQRKLKE LEVAEGGKAELERLQAEAQQLRKEERSWEQKLEEMRKKEK SMPWNVDTLKDGFSKSMVNTKPEKTEEDS EEVREQKHKTFVEKYEQIKHFGML RRWDDSQKYLSDNVHLVCEETANYLVIWCIDLEVEEKCALMEQVA HQTIVMQFILEL AKSLKVDPRACFRQFFTKIKTADRQYMEGFNDELEAFKERVGRAKLRIEKAMKEYE E EERKKRLGPGGLDPVEVYESLPEELQKCFDVKDVQMLQDAISKMDPTDAKYHMQ

 Tel: 1-631-559-9269 1-516-512-3133

 Email: info@creative-biomart.com  Fax: 1-631-938-8127

 45-1 Ramsey Road, Shirley, NY 11967, USA

RCIDSGLWVPNSKASE AKEGEEAGPGDPLLEAVPKTGDEKDVSV TRTRPLEQKLIS
EEDLAANDILDYKDDDDKV

Purity > 80% as determined by SDS-PAGE and Coomassie blue staining.

Stability Stable for 12 months from the date of receipt of the product under proper storage and handling conditions. Avoid repeated freeze-thaw cycles.

Storage Store at -80 centigrade.

Concentration >50 ug/mL as determined by microplate BCA method.

Preparation Recombinant protein was captured through anti-DDK affinity column followed by conventional chromatography steps.

Full Length Full L.

GENE INFORMATION

Gene Name CDC37 cell division cycle 37, HSP90 cochaperone [Homo sapiens (human)]

Official Symbol CDC37

Synonyms P50CDC37

Gene ID 11140

mRNA Refseq NM_007065.4

Protein Refseq NP_008996.1

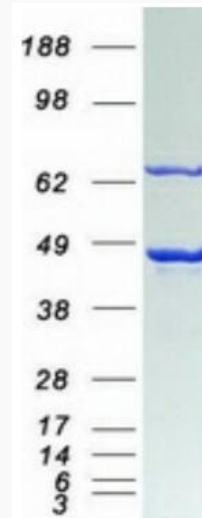
 Tel: 1-631-559-9269 1-516-512-3133

 Email: info@creative-biomart.com  Fax: 1-631-938-8127

 45-1 Ramsey Road, Shirley, NY 11967, USA

MIM 605065

UniProt ID Q16543



Coomassie blue staining of purified CDC37 protein.

 Tel: 1-631-559-9269 1-516-512-3133

 Email: info@creative-biomart.com  Fax: 1-631-938-8127

 45-1 Ramsey Road, Shirley, NY 11967, USA