

Recombinant Human CDC37 protein, GST-tagged

Cat. No. CDC37-3072H Lot. No. (See product label)

SPECIFICATION

Product Overview	Recombinant Human CDC37 protein(NP_008996.1) (Met 1-Val 378) was expressed in Insect Cells, fused with the GST tag at the C-terminus.
Species	Human
Source	Insect Cells
ProteinLength	1-378 aa
Form	Lyophilized from sterile 50mM Tris, 100mM NaCl, 0.5mM GSH, 0.5mM PMSF, 10% glycerol, pH 7.4.
Molecular Mass	The recombinant human CDC37/GST chimera consists of 603 amino acids and has a predicted a molecular mass of 70.7 kDa as estimated in SDS-PAGE under reducing conditions.
Endotoxin	< 1.0 EU per µg of the protein as determined by the LAL method.
Purity	> 85 % as determined by SDS-PAGE
Storage	Store it under sterile conditions at -20°C to -80°C upon receiving. Recommend to aliquot the protein into smaller quantities for optimal storage. Avoid repeated freeze-thaw cycles.
Reconstitution	It is recommended that sterile water be added to the vial to prepare a stock solution of

 Tel: 1-631-559-9269 1-516-512-3133

 Email: info@creative-biomart.com  Fax: 1-631-938-8127

 45-1 Ramsey Road, Shirley, NY 11967, USA

0.2 ug/ul. Centrifuge the vial at 4°C before opening to recover the entire contents.

GENE INFORMATION

Gene Name CDC37 cell division cycle 37 homolog (*S. cerevisiae*) [*Homo sapiens*]

Official Symbol CDC37

Synonyms CDC37; cell division cycle 37 homolog (*S. cerevisiae*); CDC37 (cell division cycle 37, *S. cerevisiae*, homolog) , CDC37 cell division cycle 37 homolog (*S. cerevisiae*); hsp90 co-chaperone Cdc37; CDC37 (cell division cycle 37; *S. cerevisiae*; homolog); CDC37 cell division cycle 37 homolog; Hsp90 co chaperone Cdc37; P50CDC37; hsp90 chaperone protein kinase-targeting subunit; CDC37 (cell division cycle 37, *S. cerevisiae*, homolog);

Gene ID 11140

mRNA Refseq NM_007065

Protein Refseq NP_008996

MIM 605065

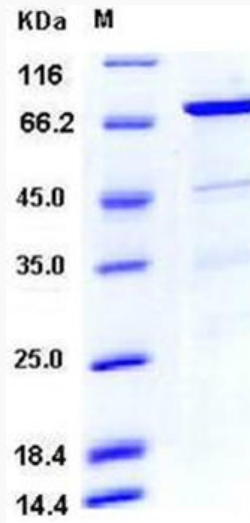
UniProt ID Q16543

 Tel: 1-631-559-9269 1-516-512-3133

 Email: info@creative-biomart.com  Fax: 1-631-938-8127

 45-1 Ramsey Road, Shirley, NY 11967, USA

SDS-PAGE



 Tel: 1-631-559-9269 1-516-512-3133

 Email: info@creative-biomart.com  Fax: 1-631-938-8127

 45-1 Ramsey Road, Shirley, NY 11967, USA