

## Recombinant Human Cell Division Cycle 37 Homolog (*S. cerevisiae*)

**Cat. No.** CDC37-331H    **Lot. No.** (See product label)

### SPECIFICATION

<b>Product Overview</b>	Recombinant CDC37 protein was expressed in E.coli and purified by using conventional chromatography techniques (378 aa, 44.4 kDa).
<b>Species</b>	Human
<b>Source</b>	E.coli
<b>Description</b>	CDC37, an essential gene in <i>Saccharomyces cerevisiae</i> , interacts genetically with multiple protein kinases. Cdc37 associates with the heat-shock protein 90 (Hsp90) molecular chaperone as one of several auxiliary proteins that are collectively referred to as Hsp90 co-chaperones. Cdc37 up-regulation is a common early event in some localized human cancers.
<b>Formulation</b>	Liquid. In 20 mM Tris-HCl buffer (pH 8.0) containing 10% glycerol.
<b>Molecular Weight</b>	44.4 kDa (378aa).
<b>Purity</b>	> 95% by SDS – PAGE.
<b>Concentration</b>	1 mg/ml (determined by Bradford assay).
<b>Endotoxin Level</b>	< 1.0 EU per 1 µg of protein (determined by LAL method).
<b>Sequence</b>	MVDYSVWDHI EVSDDEDETH PNIDTASLFR WRHQARVERM EQFQKEKEEL

 Tel: 1-631-559-9269    1-516-512-3133

 Email: [info@creative-biomart.com](mailto:info@creative-biomart.com)     Fax: 1-631-938-8127

 45-1 Ramsey Road, Shirley, NY 11967, USA

DRGCRECKRK VAECQRKLKE LEVAEGGKAE LERLQAEAQQ LRKEERSWEQ  
 KLEEMRKKEK SMPWNVDTLS KDGFSKSMVN TKPEKTEEDS EEVREQKHKT  
 FVEKYEKQIK HFGMLRRWDD SQKYLSDNVH LVCEETANYL VIWCIDLEVE  
 EKCALMEQVA HQTIVMQFIL ELAKSLKVPD RACFRQFFTK IKTADRQYME  
 GFNDELEAFK ERVRGRAKLR IEKAMKEYEE EERKKRLGPG GLDPVEVYES  
 LPEELQKCFD VKDVQMLQDA ISKMDPTDAK YHMQRCSIDSG LWVPNSKASE  
 AKEGEEAGPG DPLLEAVPKT GDEKDVSV

**Storage**

Can be stored at +4°C short term (1-2 weeks). For long term storage, aliquot and store at -20°C or -70°C. Avoid repeated freezing and thawing cycles.

**GENE INFORMATION**
**Gene Name**

[CDC37](#)

**Synonyms**

CDC37; cell division cycle 37 homolog (*S. cerevisiae*); CDC37 cell division cycle 37 homolog (*S. cerevisiae*); CDC37A; P50CDC37; p50Cdc37; cell division cycle 37 protein; CDC37 cell division cycle 37 homolog; CDC37 (cell division cycle 37, *S. cerevisiae*, homolog); Hsp90 co-chaperone Cdc37; Hsp90 chaperone protein kinase-targeting subunit; cell division cycle 37 homolog (*S. cerevisiae*).

**Gene ID**

[11140](#)

**mRNA Refseq**

[NM\\_007065.3](#)

**Protein Refseq**

[NP\\_008996.1](#)

**MIM**

[605065](#)

**UniProt ID**

[Q16543](#)

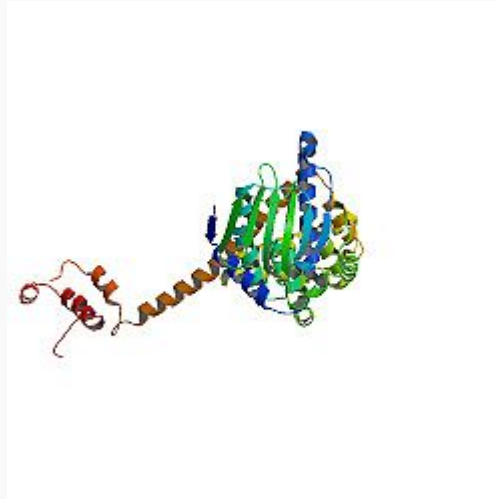
 Tel: 1-631-559-9269 1-516-512-3133

 Email: [info@creative-biomart.com](mailto:info@creative-biomart.com)  Fax: 1-631-938-8127

 45-1 Ramsey Road, Shirley, NY 11967, USA

<b>Chromosome Location</b>	19p13.2
<b>Function</b>	Hsp90 protein binding; unfolded protein binding.

**PDBrendering based on 1us7. Available structures: 1us7.**



 Tel: 1-631-559-9269 1-516-512-3133

 Email: [info@creative-biomart.com](mailto:info@creative-biomart.com)  Fax: 1-631-938-8127

 45-1 Ramsey Road, Shirley, NY 11967, USA