

Recombinant Human CDC37L1 Protein, Myc/DDK-tagged, C13 and N15-labeled

Cat. No. CDC37L1-588H **Lot. No.** (See product label)

SPECIFICATION

Product Overview	CDC37L1 MS Standard C13 and N15-labeled recombinant protein (NP_060383) with a C-terminal MYC/DDK tag, was expressed in HEK293 cells.
Species	Human
Source	HEK293
Description	CDC37L1 is a cytoplasmic phosphoprotein that exists in complex with HSP90 as well as several other proteins involved in HSP90-mediated protein folding.
Molecular Mass	38.8 kDa
AA Sequence	MEQPWPPPGPWSLPRAEGEAEESDFDVFSSPRCPQLPGGGAQMYSHGIELAC QKQKEFVKSSVACKWNLAEAQQKLGSLALHNSESLDQEHAKAQTAVSELRQREEE WRQKEEALVQREKMCLWSTDAISKDVFNKSFINQDKRKDTEDEDKSEFSMQKYEQ KIRHFGMLSRWDDSQRFLSDHPYLVCEETAKYLILWCFHLEAEKKGALMEQIAHQAV VMQFIMEMAKNCNVDPGRCFRLFFQKAKAEIEGYFEAFKNELEAFKSRVRLYSQSQ SFQPMTVQNHVPHSGVGSIGLLESQPNDYLYSISTALCSLNSVVKEDDEPKM MDTVTRTRPLEQKLISEEDLAANDILDYKDDDDKV
Purity	> 80% as determined by SDS-PAGE and Coomassie blue staining
Stability	Stable for 3 months from receipt of products under proper storage and handling conditions.

 Tel: 1-631-559-9269 1-516-512-3133

 Email: info@creative-biomart.com  Fax: 1-631-938-8127

 45-1 Ramsey Road, Shirley, NY 11967, USA

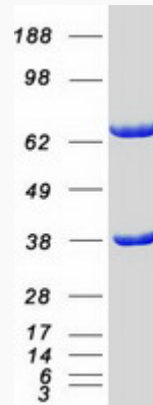
Storage	Store at -80 centigrade. Avoid repeated freeze-thaw cycles.
Concentration	50 µg/mL as determined by BCA
Storage Buffer	100 mM glycine, 25 mM Tris-HCl, pH 7.3.
GENE INFORMATION	
Gene Name	CDC37L1 cell division cycle 37 like 1 [Homo sapiens (human)]
Official Symbol	CDC37L1
Synonyms	CDC37L1; cell division cycle 37 homolog (S. cerevisiae)-like 1; CDC37 cell division cycle 37 homolog (S. cerevisiae) like 1, cell division cycle 37 homolog (S. cerevisiae) like 1; hsp90 co-chaperone Cdc37-like 1; CDC37B; FLJ20639; HARC; Hsp90-associating relative of Cdc37; CDC37 cell division cycle 37 homolog-like 1; RP11-6J24.5;
Gene ID	55664
mRNA Refseq	NM_017913
Protein Refseq	NP_060383
MIM	610346
UniProt ID	Q7L3B6

 Tel: 1-631-559-9269 1-516-512-3133

 Email: info@creative-biomart.com  Fax: 1-631-938-8127

 45-1 Ramsey Road, Shirley, NY 11967, USA

SDS-PAGE



 Tel: 1-631-559-9269 1-516-512-3133

 Email: info@creative-biomart.com  Fax: 1-631-938-8127

 45-1 Ramsey Road, Shirley, NY 11967, USA