

Recombinant Human CDC40 Protein, GST-Tagged

Cat. No. CDC40-0932H Lot. No. (See product label)

SPECIFICATION

Product Overview	Human CDC40 full-length ORF (NP_056975.1, 1 a.a. - 579 a.a.) recombinant protein with GST-tag at N-terminal.
Species	Human
Source	Wheat Germ
Description	Pre-mRNA splicing occurs in two sequential transesterification steps. The protein encoded by this gene is found to be essential for the catalytic step II in pre-mRNA splicing process. It is found in the spliceosome, and contains seven WD repeats, which function in protein-protein interactions. This protein has a sequence similarity to yeast Prp17 protein, which functions in two different cellular processes: pre-mRNA splicing and cell cycle progression. It suggests that this protein may play a role in cell cycle progression. [provided by RefSeq, Jul 2008]
Molecular Mass	91.9 kDa
AA Sequence	MSAAIAALAASYGSGSGSESDSDSESSRCPLPAADSLMHLTKSPSSKPSLAVAVDS APEVAVKEDLETGVHLDPAVKEVQYNPTYETMFAPEFGPENPFRTQQMAAPRNL SGYAEPAHINDFMFEQQRRTFATYGYALDPSLDNHQVSAKYIGSVEEAEKNQGLTV FETGQKKTEKRKKFKENDASNIDGFLGPWAKYVDEKDVAKPSEEEQKELDEITAKR QKKGKQEEKPGEEKTILHVKEMYDYQGRSYLHIPQDVGVNLRSTMPPEKCYLPKK QIHVWSGHTKGVSAVRLFPLSGHLLLSCSMDCKIKLWEVYGERRCLRTFIGHSKAVR DICFNTAGTQFLSAAYDRYLKLWDTETGQCISRFTNRKVPYCVKFNPDDEKQNLFVA

 Tel: 1-631-559-9269 1-516-512-3133

 Email: info@creative-biomart.com  Fax: 1-631-938-8127

 45-1 Ramsey Road, Shirley, NY 11967, USA

GMSDKKIVQWDIRSGEIVQEYDRHLGAVNTIVFDENRRFVSTSDDKSLRVWEWDIP
 VDFKYIAEPSMHSMPTLSPNGKWLACQSMQNLIFGAQNRFRNLNKKKIFKGHMV
 AGYACQVDFSPDMSYVISGDGNGKLNWDWKTTKLYSRFKAHDKVCIGAVWHPHE
 TSKVITCGWDGLIKLWD

Applications	Enzyme-linked Immunoabsorbent Assay Western Blot (Recombinant protein) Antibody Production Protein Array
Storage	Store at -80 centigrade. Aliquot to avoid repeated freezing and thawing.
Storage Buffer	50 mM Tris-HCl, 10 mM reduced Glutathione, pH=8.0 in the elution buffer.

GENE INFORMATION

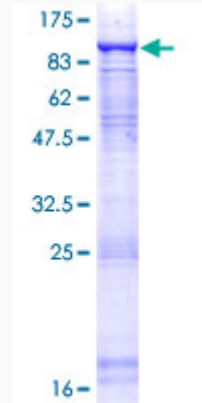
Gene Name	CDC40 cell division cycle 40 homolog (<i>S. cerevisiae</i>) [<i>Homo sapiens</i>]
Official Symbol	CDC40
Synonyms	EHB3; PRP17; PRPF17
Gene ID	51362
mRNA Refseq	NM_015891
Protein Refseq	NP_056975
MIM	605585
UniProt ID	O60508

 Tel: 1-631-559-9269 1-516-512-3133

 Email: info@creative-biomart.com  Fax: 1-631-938-8127

 45-1 Ramsey Road, Shirley, NY 11967, USA

**Quality Control
Testing**



12.5% SDS-PAGE Stained with Coomassie Blue.

 Tel: 1-631-559-9269 1-516-512-3133

 Email: info@creative-biomart.com  Fax: 1-631-938-8127

 45-1 Ramsey Road, Shirley, NY 11967, USA