

# Recombinant Full Length Human CDC42 Protein, C-Myc/DDK-tagged

Cat. No. CDC42-06HFL Lot. No. (See product label)

## SPECIFICATION

<b>Product Overview</b>	Recombinant Full Length Human CDC42 Protein, fused to Myc/DDK-tag at C-terminus, was expressed in HEK293T.
<b>Species</b>	Human
<b>Source</b>	HEK293
<b>Description</b>	The protein encoded by this gene is a small GTPase of the Rho-subfamily, which regulates signaling pathways that control diverse cellular functions including cell morphology, migration, endocytosis and cell cycle progression. This protein is highly similar to <i>Saccharomyces cerevisiae</i> Cdc 42, and is able to complement the yeast <i>cdc42-1</i> mutant. The product of oncogene <i>Dbl</i> was reported to specifically catalyze the dissociation of GDP from this protein. This protein could regulate actin polymerization through its direct binding to Neural Wiskott-Aldrich syndrome protein (N-WASP), which subsequently activates Arp2/3 complex. Alternative splicing of this gene results in multiple transcript variants. Pseudogenes of this gene have been identified on chromosomes 3, 4, 5, 7, 8 and 20.
<b>Form</b>	25 mM Tris-HCl, 100 mM glycine, pH 7.3, 10% glycerol.
<b>Molecular Mass</b>	21.1 kDa
<b>AA Sequence</b>	MQTIKCVVVG DGAVGKTCLLISYTTNKFPSEYVPTVFDNYAVTVMIGGEPYTLGLFDT AGQEDYDRLRPL SYPQTDVFLVCFVSVSPSSFENVKEKWVPEITHHCPKTPFLLVG

 Tel: 1-631-559-9269 1-516-512-3133

 Email: [info@creative-biomart.com](mailto:info@creative-biomart.com)  Fax: 1-631-938-8127

 45-1 Ramsey Road, Shirley, NY 11967, USA

TQIDLRDDPSTIEKLAKNKQKPITPE TAEKLARDLKAVKYVECSALTQKGLKNVFDEA  
 ILAALEPPEPKKSRRCVLL TRTRPLEQKLISEEDLAANDILDYKDDDDKV

<b>Purity</b>	> 80% as determined by SDS-PAGE and Coomassie blue staining.
<b>Applications</b>	Cell culture: For culture applications, please filter before use. Note that you may experience some loss of protein during the filtration process.
<b>Stability</b>	Stable for 12 months from the date of receipt of the product under proper storage and handling conditions. Avoid repeated freeze-thaw cycles.
<b>Storage</b>	Store at -80 centigrade.
<b>Concentration</b>	>50 ug/mL as determined by microplate BCA method.
<b>Preparation</b>	Recombinant protein was captured through anti-DDK affinity column followed by conventional chromatography steps.
<b>Protein Families</b>	Druggable Genome
<b>Protein Pathways</b>	Adherens junction, Axon guidance, Chemokine signaling pathway, Endocytosis, Epithelial cell signaling in Helicobacter pylori infection, Fc gamma R-mediated phagocytosis, Focal adhesion, GnRH signaling pathway, Leukocyte transendothelial migration, MAPK signaling pathway, Neurotrophin signaling pathway, Pancreatic cancer, Pathogenic Escherichia coli infection, Pathways in cancer, Regulation of actin cytoskeleton, Renal cell carcinoma, T cell receptor signaling pathway, Tight junction, VEGF signaling pathway
<b>Full Length</b>	Full L.

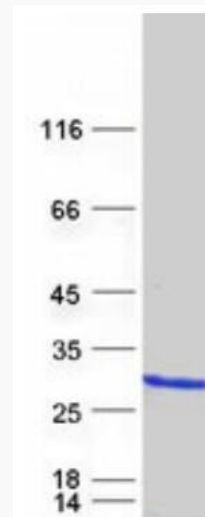
## GENE INFORMATION

 Tel: 1-631-559-9269 1-516-512-3133

 Email: [info@creative-biomart.com](mailto:info@creative-biomart.com)  Fax: 1-631-938-8127

 45-1 Ramsey Road, Shirley, NY 11967, USA

<b>Gene Name</b>	CDC42 cell division cycle 42 [ Homo sapiens (human) ]
<b>Official Symbol</b>	CDC42
<b>Synonyms</b>	TKS; G25K; CDC42Hs
<b>Gene ID</b>	998
<b>mRNA Refseq</b>	NM_001791.4
<b>Protein Refseq</b>	NP_001782.1
<b>MIM</b>	116952
<b>UniProt ID</b>	P60953

**SDS-PAGE**


Coomassie blue staining of purified CDC42 protein.

 Tel: 1-631-559-9269 1-516-512-3133

 Email: [info@creative-biomart.com](mailto:info@creative-biomart.com)  Fax: 1-631-938-8127

 45-1 Ramsey Road, Shirley, NY 11967, USA