

Recombinant Full Length Human CDC42 Protein, C-Myc/DDK-tagged

Cat. No. CDC42-07HFL Lot. No. (See product label)

SPECIFICATION

Product Overview	Recombinant Full Length Human CDC42 Protein, fused to Myc/DDK-tag at C-terminus, was expressed in HEK293T.
Species	Human
Source	HEK293
Description	The protein encoded by this gene is a small GTPase of the Rho-subfamily, which regulates signaling pathways that control diverse cellular functions including cell morphology, migration, endocytosis and cell cycle progression. This protein is highly similar to <i>Saccharomyces cerevisiae</i> Cdc 42, and is able to complement the yeast <i>cdc42-1</i> mutant. The product of oncogene <i>Dbl</i> was reported to specifically catalyze the dissociation of GDP from this protein. This protein could regulate actin polymerization through its direct binding to Neural Wiskott-Aldrich syndrome protein (N-WASP), which subsequently activates Arp2/3 complex. Alternative splicing of this gene results in multiple transcript variants. Pseudogenes of this gene have been identified on chromosomes 3, 4, 5, 7, 8 and 20.
Form	25 mM Tris-HCl, 100 mM glycine, pH 7.3, 10% glycerol.
Molecular Mass	21.1 kDa
AA Sequence	MQTIKCVVVG DGAVGKTCLLISYTTNKFPSEYVPTVFDNYAVTVMIGGEPYTLGLFDT AGQEDYDRLRPL SYPQTDVFLVCFVSVSPSSFENVKEKWVPEITHHCPKTPFLLVG

 Tel: 1-631-559-9269 1-516-512-3133

 Email: info@creative-biomart.com  Fax: 1-631-938-8127

 45-1 Ramsey Road, Shirley, NY 11967, USA

TQIDLRDDPSTIEKLAKNKQKPITPE TAEKLARDLKAVKYVECSALTQRGLKNVFDEA
 ILAALEPPETQPKRKCCIF TRTRPLEQKLISEEDLAANDILDYKDDDDKV

Purity	> 80% as determined by SDS-PAGE and Coomassie blue staining.
Applications	Cell culture: For culture applications, please filter before use. Note that you may experience some loss of protein during the filtration process.
Stability	Stable for 12 months from the date of receipt of the product under proper storage and handling conditions. Avoid repeated freeze-thaw cycles.
Storage	Store at -80 centigrade.
Concentration	>50 ug/mL as determined by microplate BCA method.
Preparation	Recombinant protein was captured through anti-DDK affinity column followed by conventional chromatography steps.
Protein Families	Druggable Genome
Protein Pathways	Adherens junction, Axon guidance, Chemokine signaling pathway, Endocytosis, Epithelial cell signaling in Helicobacter pylori infection, Fc gamma R-mediated phagocytosis, Focal adhesion, GnRH signaling pathway, Leukocyte transendothelial migration, MAPK signaling pathway, Neurotrophin signaling pathway, Pancreatic cancer, Pathogenic Escherichia coli infection, Pathways in cancer, Regulation of actin cytoskeleton, Renal cell carcinoma, T cell receptor signaling pathway, Tight junction, VEGF signaling pathway
Full Length	Full L.

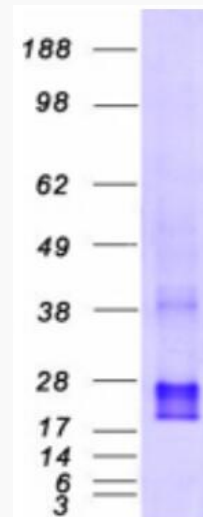
GENE INFORMATION

 Tel: 1-631-559-9269 1-516-512-3133

 Email: info@creative-biomart.com  Fax: 1-631-938-8127

 45-1 Ramsey Road, Shirley, NY 11967, USA

Gene Name	CDC42 cell division cycle 42 [Homo sapiens (human)]
Official Symbol	CDC42
Synonyms	TKS; G25K; CDC42Hs
Gene ID	998
mRNA Refseq	NM_001791.4
Protein Refseq	NP_001782.1
MIM	116952
UniProt ID	P60953

SDS-PAGE


Coomassie blue staining of purified CDC42 protein.

 Tel: 1-631-559-9269 1-516-512-3133

 Email: info@creative-biomart.com  Fax: 1-631-938-8127

 45-1 Ramsey Road, Shirley, NY 11967, USA