

Recombinant Human CDC42 Protein, GST-Tagged

Cat. No. CDC42-0934H Lot. No. (See product label)

SPECIFICATION

Product Overview Human CDC42 full-length ORF (AAH02711, 1 a.a. - 191 a.a.) recombinant protein with GST-tag at N-terminal.

Species Human

Source Wheat Germ

Description The protein encoded by this gene is a small GTPase of the Rho-subfamily, which regulates signaling pathways that control diverse cellular functions including cell morphology, migration, endocytosis and cell cycle progression. This protein is highly similar to *Saccharomyces cerevisiae* Cdc 42, and is able to complement the yeast *cdc42-1* mutant. The product of oncogene *Dbl* was reported to specifically catalyze the dissociation of GDP from this protein. This protein could regulate actin polymerization through its direct binding to Neural Wiskott-Aldrich syndrome protein (N-WASP), which subsequently activates Arp2/3 complex. Alternative splicing of this gene results in multiple transcript variants. Pseudogenes of this gene have been identified on chromosomes 3, 4, 5, 7, 8 and 20. [provided by RefSeq, Apr 2013]

Molecular Mass 46.75 kDa

AA Sequence MQTIKCVVVG DGAVGKTCLLISYTTNKFPSEYVPTVFDNYAVTVMIGGEPYTLGLFDT
AGQEDYDRLRPLSYPQTDVFLVCFVSPSSFENVKEKWWPEITHHCPKTPFLLVGT
QIDLRDDPSTIEKLAKNKQKPITPETAELKARDLKAVKYVECSALTQKGLKNVFDEAIL
AALEPPEPKKSRRCVLL

 Tel: 1-631-559-9269 1-516-512-3133

 Email: info@creative-biomart.com  Fax: 1-631-938-8127

 45-1 Ramsey Road, Shirley, NY 11967, USA

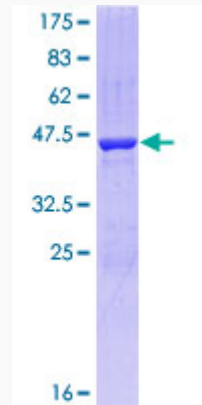
| | |
|-------------------------|---|
| Applications | <p>Enzyme-linked Immunoabsorbent Assay</p> <p>Western Blot (Recombinant protein)</p> <p>Antibody Production</p> <p>Protein Array</p> |
| Storage | Store at -80 centigrade. Aliquot to avoid repeated freezing and thawing. |
| Storage Buffer | 50 mM Tris-HCl, 10 mM reduced Glutathione, pH=8.0 in the elution buffer. |
| GENE INFORMATION | |
| Gene Name | CDC42 cell division cycle 42 (GTP binding protein, 25kDa) [Homo sapiens] |
| Official Symbol | CDC42 |
| Synonyms | CDC42; cell division cycle 42 (GTP binding protein, 25kDa); cell division cycle 42 (GTP binding protein, 25kD); cell division control protein 42 homolog; CDC42Hs; G25K; G25K GTP-binding protein; GTP-binding protein, 25kD; growth-regulating protein; small GTP binding protein CDC42; dJ224A6.1.1 (cell division cycle 42 (GTP-binding protein, 25kD)); dJ224A6.1.2 (cell division cycle 42 (GTP-binding protein, 25kD)); |
| Gene ID | 998 |
| mRNA Refseq | NM_001039802 |
| Protein Refseq | NP_001034891 |
| MIM | 116952 |
| UniProt ID | P60953 |

 Tel: 1-631-559-9269 1-516-512-3133

 Email: info@creative-biomart.com  Fax: 1-631-938-8127

 45-1 Ramsey Road, Shirley, NY 11967, USA

**Quality Control
Testing**



12.5% SDS-PAGE Stained with Coomassie Blue.

 Tel: 1-631-559-9269 1-516-512-3133

 Email: info@creative-biomart.com  Fax: 1-631-938-8127

 45-1 Ramsey Road, Shirley, NY 11967, USA