

## Recombinant Human CDC42 Protein, GST-pstS1-Tagged

Cat. No. CDC42-0936H Lot. No. (See product label)

### SPECIFICATION

<b>Product Overview</b>	Human CDC42 full-length ORF (AAH03682.1, 1 a.a. - 191 a.a.) recombinant protein with GST-pstS1 tag at N-terminal.
<b>Species</b>	Human
<b>Source</b>	Wheat Germ
<b>Description</b>	<p>The protein encoded by this gene is a small GTPase of the Rho-subfamily, which regulates signaling pathways that control diverse cellular functions including cell morphology, migration, endocytosis and cell cycle progression. This protein is highly similar to <i>Saccharomyces cerevisiae</i> Cdc 42, and is able to complement the yeast <i>cdc42-1</i> mutant. The product of oncogene <i>Dbl</i> was reported to specifically catalyze the dissociation of GDP from this protein. This protein could regulate actin polymerization through its direct binding to Neural Wiskott-Aldrich syndrome protein (N-WASP), which subsequently activates Arp2/3 complex. Alternative splicing of this gene results in multiple transcript variants. Pseudogenes of this gene have been identified on chromosomes 3, 4, 5, 7, 8 and 20. [provided by RefSeq, Apr 2013]</p>
<b>Molecular Mass</b>	49.06 kDa
<b>AA Sequence</b>	<p>MQTIKCVVVG DGAVGKTC LLISYTTN KFPSEYV PTVFDNY AVTVMIG GEPTYLGL FDT AGQEDYD RLRPLSY PQTDVFL VCFVSVSP SFFENVKE KWVPEITH HCPKTPF LLVGT QIDLRDDP STIEKLA KNKQKP ITPETA EKLARDL KAVKYVE CSALTQK GLKNVFD EAIL AALEPPE PKKSRRC VLL</p>

Tel: 1-631-559-9269 1-516-512-3133

Email: [info@creative-biomart.com](mailto:info@creative-biomart.com) Fax: 1-631-938-8127

45-1 Ramsey Road, Shirley, NY 11967, USA

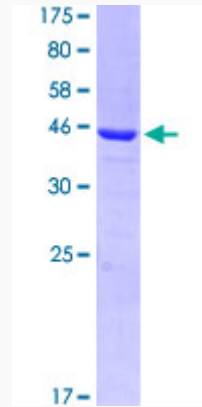
<b>Applications</b>	Enzyme-linked Immunoabsorbent Assay Western Blot (Recombinant protein) Antibody Production Protein Array
<b>Storage</b>	Store at -80 centigrade. Aliquot to avoid repeated freezing and thawing.
<b>Storage Buffer</b>	50 mM Tris-HCl, 10 mM reduced Glutathione, pH=8.0 in the elution buffer.
<b>GENE INFORMATION</b>	
<b>Gene Name</b>	CDC42 cell division cycle 42 (GTP binding protein, 25kDa) [ Homo sapiens ]
<b>Official Symbol</b>	CDC42
<b>Synonyms</b>	CDC42; cell division cycle 42 (GTP binding protein, 25kDa); cell division cycle 42 (GTP binding protein, 25kD); cell division control protein 42 homolog; CDC42Hs; G25K; G25K GTP-binding protein; GTP-binding protein, 25kD; growth-regulating protein; small GTP binding protein CDC42; dJ224A6.1.1 (cell division cycle 42 (GTP-binding protein, 25kD)); dJ224A6.1.2 (cell division cycle 42 (GTP-binding protein, 25kD));
<b>Gene ID</b>	998
<b>mRNA Refseq</b>	NM_001039802
<b>Protein Refseq</b>	NP_001034891
<b>MIM</b>	116952
<b>UniProt ID</b>	P60953

 Tel: 1-631-559-9269 1-516-512-3133

 Email: [info@creative-biomart.com](mailto:info@creative-biomart.com)  Fax: 1-631-938-8127

 45-1 Ramsey Road, Shirley, NY 11967, USA

**Quality Control  
Testing**



12.5% SDS-PAGE Stained with Coomassie Blue

 Tel: 1-631-559-9269 1-516-512-3133

 Email: [info@creative-biomart.com](mailto:info@creative-biomart.com)  Fax: 1-631-938-8127

 45-1 Ramsey Road, Shirley, NY 11967, USA