

Recombinant Human CDC42 Protein, Myc/DDK-tagged, C13 and N15-labeled

Cat. No. CDC42-6646H Lot. No. (See product label)

SPECIFICATION

Product Overview

CDC42 MS Standard C13 and N15-labeled recombinant protein (NP_001034891) with a C-terminal MYC/DDK tag, was expressed in HEK293 cells.

Species

Human

Source

HEK293

Description

The protein encoded by this gene is a small GTPase of the Rho-subfamily, which regulates signaling pathways that control diverse cellular functions including cell morphology, migration, endocytosis and cell cycle progression. This protein is highly similar to *Saccharomyces cerevisiae* Cdc 42, and is able to complement the yeast *cdc42-1* mutant. The product of oncogene *Dbl* was reported to specifically catalyze the dissociation of GDP from this protein. This protein could regulate actin polymerization through its direct binding to Neural Wiskott-Aldrich syndrome protein (N-WASP), which subsequently activates Arp2/3 complex. Alternative splicing of this gene results in multiple transcript variants. Pseudogenes of this gene have been identified on chromosomes 3, 4, 5, 7, 8 and 20.

Molecular Mass

21.3 kDa

AA Sequence

MQTIKCVVVG DGAVGKTCLLISYTTNKFPSEYVPTVFDNYAVTVMIGGEPYTLGLFDT
AGQEDYDRLRPLSYPQTDVFLVCFVSPSSFENVKEKWWPEITHHCPKTPFLVGT
QIDLRDDPSTIEKLAKNKQKPITPETAEKLRDLKAVKYVECSALTQKGLKNVFDEAIL

 Tel: 1-631-559-9269 1-516-512-3133

 Email: info@creative-biomart.com  Fax: 1-631-938-8127

 45-1 Ramsey Road, Shirley, NY 11967, USA

AALEPPEPKKSRRRCVLLTRTRPLEQKLISEEDLAANDILDYKDDDDKV

Purity > 80% as determined by SDS-PAGE and Coomassie blue staining

Stability Stable for 3 months from receipt of products under proper storage and handling conditions.

Storage Store at -80 centigrade. Avoid repeated freeze-thaw cycles.

Concentration 50 µg/mL as determined by BCA

Storage Buffer 100 mM glycine, 25 mM Tris-HCl, pH 7.3.

GENE INFORMATION

Gene Name [CDC42 cell division cycle 42 \[Homo sapiens \(human\) \]](#)

Official Symbol [CDC42](#)

Synonyms CDC42; cell division cycle 42 (GTP binding protein, 25kDa); cell division cycle 42 (GTP binding protein, 25kD); cell division control protein 42 homolog; CDC42Hs; G25K; G25K GTP-binding protein; GTP-binding protein, 25kD; growth-regulating protein; small GTP binding protein CDC42; dJ224A6.1.1 (cell division cycle 42 (GTP-binding protein, 25kD)); dJ224A6.1.2 (cell division cycle 42 (GTP-binding protein, 25kD));

Gene ID [998](#)

mRNA Refseq [NM_001039802](#)

Protein Refseq [NP_001034891](#)

 Tel: 1-631-559-9269 1-516-512-3133

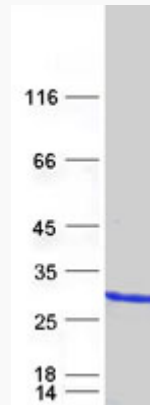
 Email: info@creative-biomart.com  Fax: 1-631-938-8127

 45-1 Ramsey Road, Shirley, NY 11967, USA

MIM 116952

UniProt ID P60953

SDS-PAGE



 Tel: 1-631-559-9269 1-516-512-3133

 Email: info@creative-biomart.com  Fax: 1-631-938-8127

 45-1 Ramsey Road, Shirley, NY 11967, USA