

# Active Recombinant Human CDC42BPA Protein, GST-Tagged

**Cat. No.** CDC42BPA-0938H    **Lot. No.** (See product label)

## SPECIFICATION

<b>Product Overview</b>	Human CDC42BPA (NP_003598.2, 1 a.a. - 574 a.a.) partial recombinant protein with GST tag expressed in baculovirus infected Sf21 cells. cells.
<b>Species</b>	Human
<b>Source</b>	Insect Cells
<b>ProteinLength</b>	1-574 a.a.
<b>Description</b>	The protein encoded by this gene is a member of the Serine/Threonine protein kinase family. This kinase contains multiple functional domains. Its kinase domain is highly similar to that of the myotonic dystrophy protein kinase (DMPK). This kinase also contains a Rac interactive binding (CRIB) domain, and has been shown to bind CDC42. It may function as a CDC42 downstream effector mediating CDC42 induced peripheral actin formation, and promoting cytoskeletal reorganization. Multiple alternatively spliced transcript variants have been described, and the full-length nature of two of them has been reported. [provided by RefSeq, Jul 2008]
<b>Form</b>	Liquid
<b>Bio-activity</b>	The activity was measured by off-chip mobility shift assay. The enzyme was incubated with fluorescence-labeled substrate and Mg(or Mn)/ATP. The phosphorylated and unphosphorylated substrates were separated and detected by LabChip 3000. Substrate: DAPK1tide. ATP: 100

 Tel: 1-631-559-9269    1-516-512-3133

 Email: [info@creative-biomart.com](mailto:info@creative-biomart.com)     Fax: 1-631-938-8127

 45-1 Ramsey Road, Shirley, NY 11967, USA

	μM.
<b>Molecular Mass</b>	93 kDa
<b>Purity</b>	97 % by SDS-PAGE/CBB staining
<b>Applications</b>	Functional Study SDS-PAGE
<b>Storage</b>	Store at -80 centigrade. Aliquot to avoid repeated freezing and thawing.
<b>Storage Buffer</b>	In 50 mM Tris-HCl, 150 mM NaCl, pH 7.5 (0.05% Brij35, 1 mM DTT, 10% glycerol)
<b>GENE INFORMATION</b>	
<b>Gene Name</b>	CDC42BPA CDC42 binding protein kinase alpha (DMPK-like) [ Homo sapiens ]
<b>Official Symbol</b>	CDC42BPA
<b>Synonyms</b>	CDC42BPA; CDC42 binding protein kinase alpha (DMPK-like); CDC42 binding protein kinase alpha (DMPK like); serine/threonine-protein kinase MRCK alpha; FLJ23347; KIAA0451; MRCK; MRCKA; myotonic dystrophy kinase related Cdc42 binding kinase; PK428; MRCK alpha; DMPK-like alpha; ser-thr protein kinase PK428; CDC42 binidng protein kinase beta; myotonic dystrophy protein kinase-like alpha; CDC42-binding protein kinase alpha (DMPK-like); myotonic dystrophy kinase-related CDC42-binding kinase alpha; myotonic dystrophy kinase-related CDC42-binding protein kinase alpha; ser-thr protein kinase related to the myotonic dystrophy protein kinase; DKFZp686L1738; DKFZp686P1738;
<b>Gene ID</b>	8476

 Tel: 1-631-559-9269 1-516-512-3133

 Email: [info@creative-biomart.com](mailto:info@creative-biomart.com)  Fax: 1-631-938-8127

 45-1 Ramsey Road, Shirley, NY 11967, USA

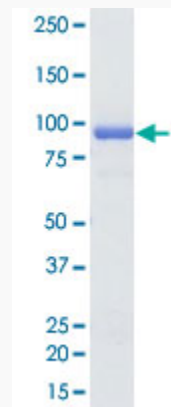
mRNA Refseq      NM\_003607

Protein Refseq      NP\_003598

MIM      603412

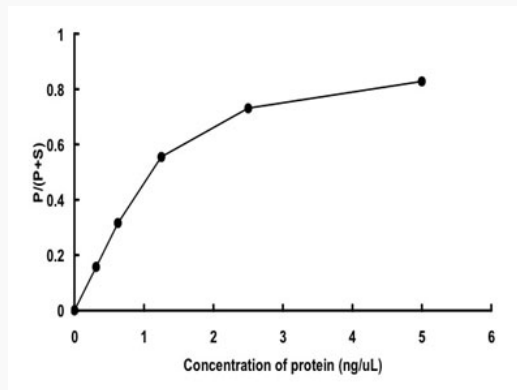
UniProt ID      Q5VT25


**Quality Control  
Testing**



Loading 1  $\mu$ g protein in SDS-PAGE

**Result of activity  
analysis**



 Tel: 1-631-559-9269    1-516-512-3133

 Email: [info@creative-biomart.com](mailto:info@creative-biomart.com)     Fax: 1-631-938-8127

 45-1 Ramsey Road, Shirley, NY 11967, USA