

Recombinant Human CDC42BPA Protein, GST-Tagged

Cat. No. CDC42BPA-0939H **Lot. No.** (See product label)

SPECIFICATION

Product Overview	Human CDC42BPA partial ORF (NP_003598, 551 a.a. - 650 a.a.) recombinant protein with GST-tag at N-terminal.
Species	Human
Source	Wheat Germ
Description	The protein encoded by this gene is a member of the Serine/Threonine protein kinase family. This kinase contains multiple functional domains. Its kinase domain is highly similar to that of the myotonic dystrophy protein kinase (DMPK). This kinase also contains a Rac interactive binding (CRIB) domain, and has been shown to bind CDC42. It may function as a CDC42 downstream effector mediating CDC42 induced peripheral actin formation, and promoting cytoskeletal reorganization. Multiple alternatively spliced transcript variants have been described, and the full-length nature of two of them has been reported. [provided by RefSeq, Jul 2008]
Molecular Mass	36.63 kDa
AA Sequence	LVQASERLKNQSKELKDAHCQRKLAMQEFMEINERLTELHTQKQKRLARHVRDKEEE VDLVMQKVESLRQELRRTERAKKELEVHTEALAAEASKDRKLRE
Applications	Enzyme-linked Immunoabsorbent Assay Western Blot (Recombinant protein) Antibody Production Protein Array

 Tel: 1-631-559-9269 1-516-512-3133

 Email: info@creative-biomart.com  Fax: 1-631-938-8127

 45-1 Ramsey Road, Shirley, NY 11967, USA

Storage Store at -80 centigrade. Aliquot to avoid repeated freezing and thawing.

Storage Buffer 50 mM Tris-HCl, 10 mM reduced Glutathione, pH=8.0 in the elution buffer.

GENE INFORMATION

Gene Name CDC42BPA CDC42 binding protein kinase alpha (DMPK-like) [Homo sapiens]

Official Symbol CDC42BPA

Synonyms

CDC42BPA; CDC42 binding protein kinase alpha (DMPK-like); CDC42 binding protein kinase alpha (DMPK like); serine/threonine-protein kinase MRCK alpha; FLJ23347; KIAA0451; MRCK; MRCKA; myotonic dystrophy kinase related Cdc42 binding kinase; PK428; MRCK alpha; DMPK-like alpha; ser-thr protein kinase PK428; CDC42 binidng protein kinase beta; myotonic dystrophy protein kinase-like alpha; CDC42-binding protein kinase alpha (DMPK-like); myotonic dystrophy kinase-related CDC42-binding kinase alpha; myotonic dystrophy kinase-related CDC42-binding protein kinase alpha; ser-thr protein kinase related to the myotonic dystrophy protein kinase; DKFZp686L1738; DKFZp686P1738;

Gene ID 8476

mRNA Refseq NM_003607

Protein Refseq NP_003598

MIM 603412

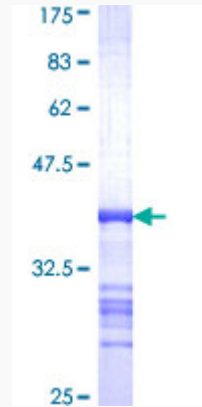
UniProt ID Q5VT25

 Tel: 1-631-559-9269 1-516-512-3133

 Email: info@creative-biomart.com  Fax: 1-631-938-8127

 45-1 Ramsey Road, Shirley, NY 11967, USA

**Quality Control
Testing**



12.5% SDS-PAGE Stained with Coomassie Blue.

 Tel: 1-631-559-9269 1-516-512-3133

 Email: info@creative-biomart.com  Fax: 1-631-938-8127

 45-1 Ramsey Road, Shirley, NY 11967, USA