

Active Recombinant Human CDC42BPB Protein, GST-Tagged

Cat. No. CDC42BPB-0940H **Lot. No.** (See product label)

SPECIFICATION

Product Overview	Human CDC42BPB (NP_006026.3, 1 a.a. - 473 a.a.) partial recombinant protein with GST tag expressed in Baculovirus infected Sf21 cells. cells.
Species	Human
Source	Insect Cells
ProteinLength	1-473 a.a.
Description	This gene encodes a member of the serine/threonine protein kinase family. The encoded protein contains a Cdc42/Rac-binding p21 binding domain resembling that of PAK kinase. The kinase domain of this protein is most closely related to that of myotonic dystrophy kinase-related ROK. Studies of the similar gene in rat suggested that this kinase may act as a downstream effector of Cdc42 in cytoskeletal reorganization. [provided by RefSeq, Jul 2008]
Form	Liquid
Bio-activity	The activity was measured by off-chip mobility shift assay. The enzyme was incubated with fluorescence-labeled substrate and Mg (or Mn)/ATP. The phosphorylated and unphosphorylated substrates were separated and detected by LabChip™3000. Substrate: DAPK1tide. ATP: 100 μM.
Molecular Mass	82 kDa

 Tel: 1-631-559-9269 1-516-512-3133

 Email: info@creative-biomart.com  Fax: 1-631-938-8127

 45-1 Ramsey Road, Shirley, NY 11967, USA

Purity	61 % by SDS-PAGE/CBB staining
Applications	Enzyme-linked Immunoabsorbent Assay Western Blot (Recombinant protein) Antibody Production Protein Array
Storage	Store at -80 centigrade. Aliquot to avoid repeated freezing and thawing.
Storage Buffer	In 50 mM Tris-HCl, 150 mM NaCl, pH 7.5 (0.05% Brij35, 1 mM DTT, 10% glycerol)

GENE INFORMATION

Gene Name	CDC42BPB CDC42 binding protein kinase beta (DMPK-like) [Homo sapiens]
Official Symbol	CDC42BPB
Synonyms	CDC42BPB; CDC42 binding protein kinase beta (DMPK-like); CDC42 binding protein kinase beta (DMPK like); serine/threonine-protein kinase MRCK beta; KIAA1124; MRCKB; MRCK beta; CDC42BP-beta; DMPK-like beta; myotonic dystrophy protein kinase-like beta; CDC42-binding protein kinase beta (DMPK-like); myotonic dystrophy kinase-related CDC42-binding kinase beta; FLJ37601; FLJ44730; DKFZp686H1431;
Gene ID	9578
mRNA Refseq	NM_006035
Protein Refseq	NP_006026
MIM	614062

 Tel: 1-631-559-9269 1-516-512-3133

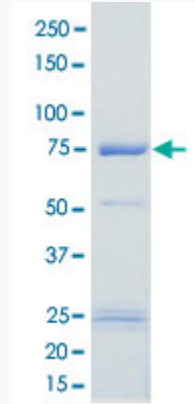
 Email: info@creative-biomart.com  Fax: 1-631-938-8127

 45-1 Ramsey Road, Shirley, NY 11967, USA

UniProt ID

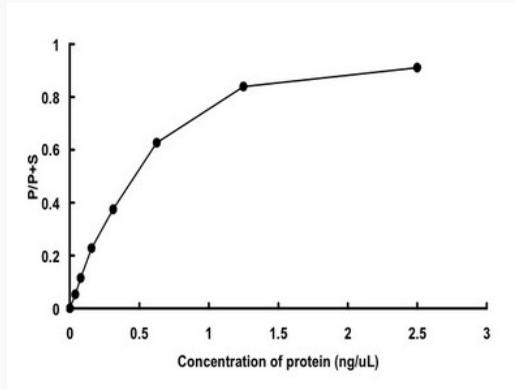
Q9Y5S2

Quality Control
Testing



Loading 1 μ g protein in SDS-PAGE

Result of activity
analysis



 Tel: 1-631-559-9269 1-516-512-3133

 Email: info@creative-biomart.com  Fax: 1-631-938-8127

 45-1 Ramsey Road, Shirley, NY 11967, USA