

Recombinant Human CDC42BPB Protein, GST-Tagged

Cat. No. CDC42BPB-0941H Lot. No. (See product label)

SPECIFICATION

Product Overview	Human CDC42BPB partial ORF (AAD37506, 1580 a.a. - 1679 a.a.) recombinant protein with GST-tag at N-terminal.
Species	Human
Source	Wheat Germ
Description	This gene encodes a member of the serine/threonine protein kinase family. The encoded protein contains a Cdc42/Rac-binding p21 binding domain resembling that of PAK kinase. The kinase domain of this protein is most closely related to that of myotonic dystrophy kinase-related ROK. Studies of the similar gene in rat suggested that this kinase may act as a downstream effector of Cdc42 in cytoskeletal reorganization. [provided by RefSeq, Jul 2008]
Molecular Mass	36.63 kDa
AA Sequence	SKMISNPTNFNHVAHMGPGDGMQVLMIDLPLSAVPPSQEERPGPAPTNLARQPPSR NKPYISWPSSGGSEPSVTVPLRSMSPDQDFDKEPDSSTKHSTP
Applications	Enzyme-linked Immunoabsorbent Assay Western Blot (Recombinant protein) Antibody Production Protein Array
Storage	Store at -80 centigrade. Aliquot to avoid repeated freezing and thawing.

 Tel: 1-631-559-9269 1-516-512-3133

 Email: info@creative-biomart.com  Fax: 1-631-938-8127

 45-1 Ramsey Road, Shirley, NY 11967, USA

Storage Buffer 50 mM Tris-HCl, 10 mM reduced Glutathione, pH=8.0 in the elution buffer.

GENE INFORMATION

Gene Name [CDC42BPB](#) CDC42 binding protein kinase beta (DMPK-like) [Homo sapiens]

Official Symbol [CDC42BPB](#)

Synonyms CDC42BPB; CDC42 binding protein kinase beta (DMPK-like); CDC42 binding protein kinase beta (DMPK like); serine/threonine-protein kinase MRCK beta; KIAA1124; MRCKB; MRCK beta; CDC42BP-beta; DMPK-like beta; myotonic dystrophy protein kinase-like beta; CDC42-binding protein kinase beta (DMPK-like); myotonic dystrophy kinase-related CDC42-binding kinase beta; FLJ37601; FLJ44730; DKFZp686H1431;

Gene ID [9578](#)

mRNA Refseq [NM_006035](#)

Protein Refseq [NP_006026](#)

MIM [614062](#)

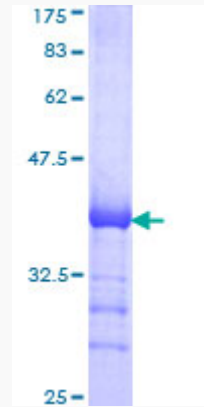
UniProt ID [Q9Y5S2](#)

 Tel: 1-631-559-9269 1-516-512-3133

 Email: info@creative-biomart.com  Fax: 1-631-938-8127

 45-1 Ramsey Road, Shirley, NY 11967, USA

**Quality Control
Testing**



12.5% SDS-PAGE Stained with Coomassie Blue.

 Tel: 1-631-559-9269 1-516-512-3133

 Email: info@creative-biomart.com  Fax: 1-631-938-8127

 45-1 Ramsey Road, Shirley, NY 11967, USA