

Active Recombinant Human CDC42BPG Protein, GST-Tagged

Cat. No. CDC42BPG-0942H **Lot. No.** (See product label)

SPECIFICATION

Product Overview	Human CDC42BPG (NP_059995.2, 1 a.a. - 473 a.a.) partial recombinant protein with GST tag expressed in baculovirus infected Sf21 cells. cells.
Species	Human
Source	Insect Cells
ProteinLength	1-473 a.a.
Description	CDC42BPG (CDC42 Binding Protein Kinase Gamma) is a Protein Coding gene. GO annotations related to this gene include transferase activity, transferring phosphorus-containing groups and protein tyrosine kinase activity. An important paralog of this gene is CDC42BPA.
Form	Liquid
Bio-activity	The activity was measured by off-chip mobility shift assay. The enzyme was incubated with fluorescence-labeled substrate and Mg (or Mn)/ATP. The phosphorylated and unphosphorylated substrates were separated and detected by LabChip 3000. Substrate: DAPK1tide. ATP: 100 μM.
Molecular Mass	81 kDa
Purity	87 % by SDS-PAGE/CBB staining

 Tel: 1-631-559-9269 1-516-512-3133

 Email: info@creative-biomart.com  Fax: 1-631-938-8127

 45-1 Ramsey Road, Shirley, NY 11967, USA

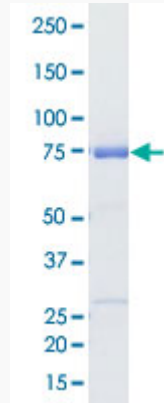
Applications	Functional Study SDS-PAGE
Storage	Store at -80 centigrade. Aliquot to avoid repeated freezing and thawing.
Storage Buffer	In 50 mM Tris-HCl, 150 mM NaCl, pH 7.5 (0.1% CHAPS, 1 mM DTT, 10% glycerol)
GENE INFORMATION	
Gene Name	CDC42BPG CDC42 binding protein kinase gamma (DMPK-like) [Homo sapiens]
Official Symbol	CDC42BPG
Synonyms	CDC42BPG; CDC42 binding protein kinase gamma (DMPK-like); serine/threonine-protein kinase MRCK gamma; DMPK2; HSMDPKIN; kappa 200; MRCKgamma; MRCK gamma; DMPK-like gamma; CDC42-binding protein kinase gamma; myotonic dystrophy protein kinase-like alpha; myotonic dystrophy protein kinase-like gamma; myotonic dystrophy protein kinase like protein; myotonic dystrophy kinase-related CDC42-binding kinase gamma; MRCKG; KAPPA-200;
Gene ID	55561
mRNA Refseq	NM_017525
Protein Refseq	NP_059995
MIM	613991
UniProt ID	Q6DT37

 Tel: 1-631-559-9269 1-516-512-3133

 Email: info@creative-biomart.com  Fax: 1-631-938-8127

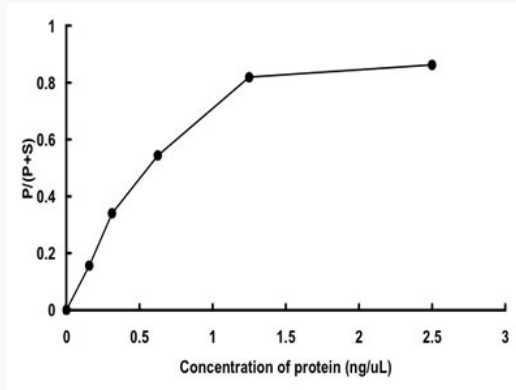
 45-1 Ramsey Road, Shirley, NY 11967, USA

**Quality Control
Testing**



Loading 1 μ g protein in SDS-PAGE

**Result of activity
analysis**



 Tel: 1-631-559-9269 1-516-512-3133

 Email: info@creative-biomart.com  Fax: 1-631-938-8127

 45-1 Ramsey Road, Shirley, NY 11967, USA