

## Recombinant Human CDC42BPG Protein, GST-Tagged

**Cat. No.** CDC42BPG-0943H    **Lot. No.** (See product label)

### SPECIFICATION

<b>Product Overview</b>	Human CDC42BPG partial ORF (NP_059995, 1423 a.a. - 1528 a.a.) recombinant protein with GST-tag at N-terminal.
<b>Species</b>	Human
<b>Source</b>	Wheat Germ
<b>Description</b>	CDC42BPG (CDC42 Binding Protein Kinase Gamma) is a Protein Coding gene. GO annotations related to this gene include transferase activity, transferring phosphorus-containing groups and protein tyrosine kinase activity. An important paralog of this gene is CDC42BPA.
<b>Molecular Mass</b>	37.4 kDa
<b>AA Sequence</b>	RREMLKDPFVRSKLISSPTNFNHLVHVGPNRPGARDKSPAPEEKGRVARGSGP QRPHSFSEALRRPASMGSSEGLGGDADPMKRKPWTLSSESVSQCPQGSLSPA
<b>Applications</b>	Enzyme-linked Immunoabsorbent Assay Western Blot (Recombinant protein) Antibody Production Protein Array
<b>Storage</b>	Store at -80 centigrade. Aliquot to avoid repeated freezing and thawing.
<b>Storage Buffer</b>	50 mM Tris-HCl, 10 mM reduced Glutathione, pH=8.0 in the elution buffer.

 Tel: 1-631-559-9269    1-516-512-3133

 Email: [info@creative-biomart.com](mailto:info@creative-biomart.com)     Fax: 1-631-938-8127

 45-1 Ramsey Road, Shirley, NY 11967, USA

## GENE INFORMATION

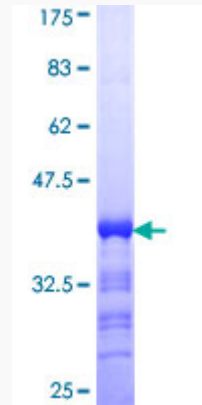
<b>Gene Name</b>	CDC42BPG CDC42 binding protein kinase gamma (DMPK-like) [ Homo sapiens ]
<b>Official Symbol</b>	CDC42BPG
<b>Synonyms</b>	CDC42BPG; CDC42 binding protein kinase gamma (DMPK-like); serine/threonine-protein kinase MRCK gamma; DMPK2; HSMDPKIN; kappa 200; MRCKgamma; MRCK gamma; DMPK-like gamma; CDC42-binding protein kinase gamma; myotonic dystrophy protein kinase-like alpha; myotonic dystrophy protein kinase-like gamma; myotonic dystrophy protein kinase like protein; myotonic dystrophy kinase-related CDC42-binding kinase gamma; MRCKG; KAPPA-200;
<b>Gene ID</b>	55561
<b>mRNA Refseq</b>	NM_017525
<b>Protein Refseq</b>	NP_059995
<b>MIM</b>	613991
<b>UniProt ID</b>	Q6DT37

 Tel: 1-631-559-9269 1-516-512-3133

 Email: [info@creative-biomart.com](mailto:info@creative-biomart.com)  Fax: 1-631-938-8127

 45-1 Ramsey Road, Shirley, NY 11967, USA

**Quality Control  
Testing**



12.5% SDS-PAGE Stained with Coomassie Blue.

 Tel: 1-631-559-9269 1-516-512-3133

 Email: [info@creative-biomart.com](mailto:info@creative-biomart.com)  Fax: 1-631-938-8127

 45-1 Ramsey Road, Shirley, NY 11967, USA