

Recombinant Human CDC42EP1 Protein, GST-Tagged

Cat. No. CDC42EP1-0944H Lot. No. (See product label)

SPECIFICATION

Product Overview	Human CDC42EP1 full-length ORF (AAH09356, 1 a.a. - 384 a.a.) recombinant protein with GST-tag at N-terminal.
Species	Human
Source	Wheat Germ
Description	CDC42 is a member of the Rho GTPase family that regulates multiple cellular activities, including actin polymerization. The protein encoded by this gene is a CDC42 binding protein that mediates actin cytoskeleton reorganization at the plasma membrane. This protein is secreted and is primarily found in bone marrow. [provided by RefSeq, Jul 2008]
Molecular Mass	67.98 kDa
AA Sequence	<p>MPGPQGGRGAATMSLGKLSVGVVSSSQGKRRLTADMISHPLGDFRHTMHVGRG GDVFGDTSFLSNHGGSSGSTRSPRSFLAKKLQLVRRVGAPPRRMASPPAPSPAP PAISPIIKNAISLPQLNQAAYDSL VVGKLSFDSSPTSSTDGHSSYGLDSGFACTISRLPR SEKPHDRDRDGSFPSEPLRRSDSLLSFRLLDLGPSLLSELLGVMSLPEAPAAETP APAANPPAPTANPTGPAANPPATTANPPAPAATPTGPAANPPAPAASSTPHGHCPN GVTAGLGPVAEVKSSPVGGGPRGPAGPALGRHWGAGWDGGHHYPEDARQERV EVLPQARASWESLDEEWRAPQAGSRTPVPSTVQANTFEFADAEEDDEVKV</p>
Applications	Enzyme-linked Immunoabsorbent Assay Western Blot (Recombinant protein)

 Tel: 1-631-559-9269 1-516-512-3133

 Email: info@creative-biomart.com  Fax: 1-631-938-8127

 45-1 Ramsey Road, Shirley, NY 11967, USA

Antibody Production
Protein Array

Storage Store at -80 centigrade. Aliquot to avoid repeated freezing and thawing.

Storage Buffer 50 mM Tris-HCl, 10 mM reduced Glutathione, pH=8.0 in the elution buffer.

GENE INFORMATION

Gene Name [CDC42EP1 CDC42 effector protein \(Rho GTPase binding\) 1 \[Homo sapiens \]](#)

Official Symbol [CDC42EP1](#)

Synonyms CDC42EP1; CDC42 effector protein (Rho GTPase binding) 1; cdc42 effector protein 1; 55 kDa bone marrow stromal/endothelial cell protein; Borg5; CEP1; MSE55; serum constituent protein; serum protein MSE55; binder of Rho GTPases 5; BORG5; MGC15316;

Gene ID [11135](#)

mRNA Refseq [NM_152243](#)

Protein Refseq [NP_689449](#)

MIM [606084](#)

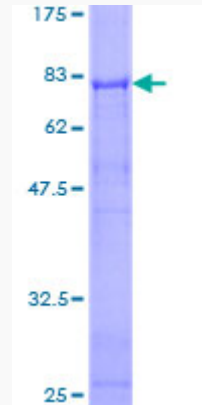
UniProt ID [Q00587](#)

 Tel: 1-631-559-9269 1-516-512-3133

 Email: info@creative-biomart.com  Fax: 1-631-938-8127

 45-1 Ramsey Road, Shirley, NY 11967, USA

**Quality Control
Testing**



12.5% SDS-PAGE Stained with Coomassie Blue.

 Tel: 1-631-559-9269 1-516-512-3133

 Email: info@creative-biomart.com  Fax: 1-631-938-8127

 45-1 Ramsey Road, Shirley, NY 11967, USA