

## Recombinant Human CDC42EP2 Protein, GST-Tagged

Cat. No. CDC42EP2-0945H Lot. No. (See product label)

### SPECIFICATION

<b>Product Overview</b>	Human CDC42EP2 full-length ORF (NP_006770.1, 1 a.a. - 210 a.a.) recombinant protein with GST-tag at N-terminal.
<b>Species</b>	Human
<b>Source</b>	Wheat Germ
<b>Description</b>	CDC42, a small Rho GTPase, regulates the formation of F-actin-containing structures through its interaction with the downstream effector proteins. The protein encoded by this gene is a member of the Borg family of CDC42 effector proteins. Borg family proteins contain a CRIB (Cdc42/Rac interactive-binding) domain. They bind to, and negatively regulate the function of CDC42. Coexpression of this protein with CDC42 suggested a role of this protein in actin filament assembly and cell shape control. [provided by RefSeq, Aug 2011]
<b>Molecular Mass</b>	48.9 kDa
<b>AA Sequence</b>	MSTKVPIYLKRGSRKGGKKEKLRDLLSSDMISPPLGDFRHTIHIGSGGGSDMFGDISFL QGKFHLLPGTMVEGPEEDGTFDLPFQFTRTATVCGRELPDGPSPLLKNAISLPVIGG PQALTLPTAQAPPKPPRLHLETPQPSPQEGGSVDIWRIPETGSPNSGLTPESGAEEP FLSNASSLLSLHVDLGPSILDDVLQIMDQDLDSMQIPT
<b>Applications</b>	Enzyme-linked Immunoabsorbent Assay Western Blot (Recombinant protein) Antibody Production

 Tel: 1-631-559-9269 1-516-512-3133

 Email: [info@creative-biomart.com](mailto:info@creative-biomart.com)  Fax: 1-631-938-8127

 45-1 Ramsey Road, Shirley, NY 11967, USA

**Protein Array**

**Storage** Store at -80 centigrade. Aliquot to avoid repeated freezing and thawing.

**Storage Buffer** 50 mM Tris-HCl, 10 mM reduced Glutathione, pH=8.0 in the elution buffer.

**GENE INFORMATION**

**Gene Name** [CDC42EP2 CDC42 effector protein \(Rho GTPase binding\) 2 \[ Homo sapiens \]](#)

**Official Symbol** [CDC42EP2](#)

**Synonyms** CDC42EP2; CDC42 effector protein (Rho GTPase binding) 2; cdc42 effector protein 2; BORG1; CEP2; CRIB containing BOGR1 protein; binder of Rho GTPases 1; CRIB-containing BOGR1 protein;

**Gene ID** [10435](#)

**mRNA Refseq** [NM\\_006779](#)

**Protein Refseq** [NP\\_006770](#)

**MIM** [606132](#)

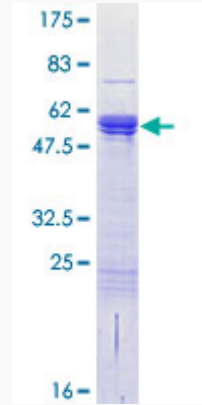
**UniProt ID** [O14613](#)

 Tel: 1-631-559-9269 1-516-512-3133

 Email: [info@creative-biomart.com](mailto:info@creative-biomart.com)  Fax: 1-631-938-8127

 45-1 Ramsey Road, Shirley, NY 11967, USA

**Quality Control  
Testing**



12.5% SDS-PAGE Stained with Coomassie Blue.

 Tel: 1-631-559-9269 1-516-512-3133

 Email: [info@creative-biomart.com](mailto:info@creative-biomart.com)  Fax: 1-631-938-8127

 45-1 Ramsey Road, Shirley, NY 11967, USA