

Recombinant Human CDC42EP2 Protein, Myc/DDK-tagged, C13 and N15-labeled

Cat. No. CDC42EP2-1650H Lot. No. (See product label)

SPECIFICATION

Product Overview	CDC42EP2 MS Standard C13 and N15-labeled recombinant protein (NP_006770) with a C-terminal MYC/DDK tag, was expressed in HEK293 cells.
Species	Human
Source	HEK293
Description	CDC42, a small Rho GTPase, regulates the formation of F-actin-containing structures through its interaction with the downstream effector proteins. The protein encoded by this gene is a member of the Borg family of CDC42 effector proteins. Borg family proteins contain a CRIB (Cdc42/Rac interactive-binding) domain. They bind to, and negatively regulate the function of CDC42. Coexpression of this protein with CDC42 suggested a role of this protein in actin filament assembly and cell shape control.
Molecular Mass	22.5 kDa
AA Sequence	MSTKVPIYLKRGSRKGGKKEKLRDLLSSDMISPPLGDFRHTIHIGSGGGSDMFGDISFL QGKFHLLPGTMVEGPEEDGTFDLPFQFTRTATVCGRELPDGPSPLLKNAISLPVIGG PQALTLPTAQAPPKPPRLHLETPQPSPQEGGSVDIWRIPETGSPNSGLTPESGAEEP FLSNASSLLSLHVDLGPSILDDVLQIMDQDLDSMQIPTTRTRPLEQKLISEEDLAANDI LDYKDDDDKV
Purity	> 80% as determined by SDS-PAGE and Coomassie blue staining

 Tel: 1-631-559-9269 1-516-512-3133

 Email: info@creative-biomart.com  Fax: 1-631-938-8127

 45-1 Ramsey Road, Shirley, NY 11967, USA

Stability	Stable for 3 months from receipt of products under proper storage and handling conditions.
Storage	Store at -80 centigrade. Avoid repeated freeze-thaw cycles.
Concentration	50 µg/mL as determined by BCA
Storage Buffer	100 mM glycine, 25 mM Tris-HCl, pH 7.3.

GENE INFORMATION

Gene Name	CDC42EP2 CDC42 effector protein 2 [Homo sapiens (human)]
Official Symbol	CDC42EP2
Synonyms	CDC42EP2; CDC42 effector protein (Rho GTPase binding) 2; cdc42 effector protein 2; BORG1; CEP2; CRIB containing BOGR1 protein; binder of Rho GTPases 1; CRIB-containing BOGR1 protein;
Gene ID	10435
mRNA Refseq	NM_006779
Protein Refseq	NP_006770
MIM	606132
UniProt ID	O14613

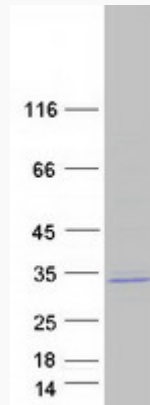
 Tel: 1-631-559-9269 1-516-512-3133

 Email: info@creative-biomart.com  Fax: 1-631-938-8127

 45-1 Ramsey Road, Shirley, NY 11967, USA



SDS-PAGE



Tel: 1-631-559-9269 1-516-512-3133

Email: info@creative-biomart.com Fax: 1-631-938-8127

45-1 Ramsey Road, Shirley, NY 11967, USA