

Recombinant Human CDC42EP4 Protein, GST-Tagged

Cat. No. CDC42EP4-0949H Lot. No. (See product label)

SPECIFICATION

Product Overview	Human CDC42EP4 full-length ORF (NP_036253.2, 1 a.a. - 356 a.a.) recombinant protein with GST-tag at N-terminal.
Species	Human
Source	Wheat Germ
Description	The product of this gene is a member of the CDC42-binding protein family. Members of this family interact with Rho family GTPases and regulate the organization of the actin cytoskeleton. This protein has been shown to bind both CDC42 and TC10 GTPases in a GTP-dependent manner. When overexpressed in fibroblasts, this protein was able to induce pseudopodia formation, which suggested a role in inducing actin filament assembly and cell shape control. [provided by RefSeq, Jul 2008]
Molecular Mass	64.4 kDa
AA Sequence	MPILKQLVSSSVHSKRRSRADLTAEMISAPLGDFRHTMHVGRAGDAFGDTSFLNSK AGEPDGESLDEQPSSSSSKRSLLSRKFRGSKRSQSVTRGEREQRDMLGSLRDSAL FVKNAMSLPQLNEKEAAEKGTSKLPKSLSSSPVKKANDGEGGDEEAGTEEAVPRRN GAAGPHSPDLLDEQAFGDLTDLPVVPKATYGLKHAESIMSFHIDLGPSMLGDVLSI MDKEEWDPEEGEGGYHGDEGAAGTITQAPPYAVAAPPLARQEGKAGPDLPSLPSH ALEDEGWAAAAPSPGSARSMGSHTTRDSSSLSSCTSGILEERSPAFRGPDRARA SRQPDKEFSFMDEEEDEIRV
Applications	Enzyme-linked Immunoabsorbent Assay

 Tel: 1-631-559-9269 1-516-512-3133

 Email: info@creative-biomart.com  Fax: 1-631-938-8127

 45-1 Ramsey Road, Shirley, NY 11967, USA

Western Blot (Recombinant protein)
 Antibody Production
 Protein Array

Storage Store at -80 centigrade. Aliquot to avoid repeated freezing and thawing.

Storage Buffer 50 mM Tris-HCl, 10 mM reduced Glutathione, pH=8.0 in the elution buffer.

GENE INFORMATION

Gene Name [CDC42EP4 CDC42 effector protein \(Rho GTPase binding\) 4 \[Homo sapiens \]](#)

Official Symbol [CDC42EP4](#)

Synonyms CDC42EP4; CDC42 effector protein (Rho GTPase binding) 4; cdc42 effector protein 4; binder of Rho GTPases 4; BORG4; Cdc42 effector protein 4; CEP4; KAIA1777; MGC3740; MGC17125;

Gene ID [23580](#)

mRNA Refseq [NM_012121](#)

Protein Refseq [NP_036253](#)

MIM [605468](#)

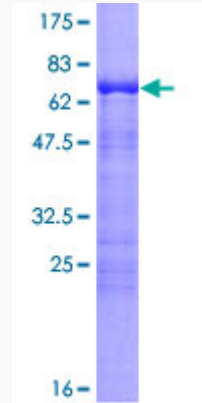
UniProt ID [Q9H3Q1](#)

 Tel: 1-631-559-9269 1-516-512-3133

 Email: info@creative-biomart.com  Fax: 1-631-938-8127

 45-1 Ramsey Road, Shirley, NY 11967, USA

**Quality Control
Testing**



12.5% SDS-PAGE Stained with Coomassie Blue.

 Tel: 1-631-559-9269 1-516-512-3133

 Email: info@creative-biomart.com  Fax: 1-631-938-8127

 45-1 Ramsey Road, Shirley, NY 11967, USA