

Recombinant Human CDC5L Protein, GST-Tagged

Cat. No. CDC5L-0954H Lot. No. (See product label)

SPECIFICATION

Product Overview Human CDC5L full-length ORF (NP_001244.1, 1 a.a. - 802 a.a.) recombinant protein with GST-tag at N-terminal.

Species Human

Source Wheat Germ

Description The protein encoded by this gene shares a significant similarity with *Schizosaccharomyces pombe cdc5* gene product, which is a cell cycle regulator important for G2/M transition. This protein has been demonstrated to act as a positive regulator of cell cycle G2/M progression. It was also found to be an essential component of a non-snRNA spliceosome, which contains at least five additional protein factors and is required for the second catalytic step of pre-mRNA splicing. [provided by RefSeq, Jul 2008]

Molecular Mass 118.7 kDa

AA Sequence

```

MPRIMIKGGVWRNTEDEILKAAVMKYGKNQWSRIASLLHRKSAKQCKARWYEWLD
PSIKKTEWSREEEEKLLHLAKLMPTQWRTIAPIIIGRTAAQCLEHYEFLDKAAQRDNE
EETDDPRKLPGEIDPNPETKPARPDPIDMDEDELEMLSEARARLANTQGKKAKRK
AREKQLEEARRLAALQKRRELRAAGIEIQKRRKRKRGVDYNAEIPFEKKPALGFYDT
SEENYQALDADFRKLRQQDLGELRSEKEGRDRKKDKQHLKRKESDLPSAILQTS
GVSEFTKKRSKLVLPAPQISDAELQEVVKVGQASEIARQTAEEESGITNSASSTLLSEY
NVTNNSVALRTPRTPASQDRILQEAQNLMALTNVDTPLKGGGLNTPLHESDFSGVTP
    
```

 Tel: 1-631-559-9269 1-516-512-3133

 Email: info@creative-biomart.com  Fax: 1-631-938-8127

 45-1 Ramsey Road, Shirley, NY 11967, USA

QRQVVQTPNTVLSTPFRTPSNGAEGTTPRSGTTPKPVINSTPGRTPLRDKLNINPED
 GMADYS DPSYVKQMERESREHLRLGLLGLPAPKNDFEIVLPENAEKELEEREIDDTY
 IEDAADV DARKQAIRDAERVKEMKRMHKAVQKDLPRPSEVNETILRPLNVEPPLTDL
 QKSEELIKKEMITMLHYDLLHHPYEPSGNKKGKTVGFGTNNSEHITYLEHNPYEKFS
 KEELKKAQDVLVQEMEVVKQGM SHGELSSEAYNQVWEECY SQVLYLPGQSR YTRA
 NLASKKDRIESLEKRLEINRGHMTTEAKRAAKMEKKMKILLGGYQSRAMGLMKQLN
 DLWDQIEQAHLRLRTFEELKKHEDSAIPRRLECLKEDVQRQQEREKELQHRYADLLL
 EKETLKSKF

Applications

Enzyme-linked Immunoabsorbent Assay
 Western Blot (Recombinant protein)
 Antibody Production
 Protein Array

Storage

Store at -80 centigrade. Aliquot to avoid repeated freezing and thawing.

Storage Buffer

50 mM Tris-HCl, 10 mM reduced Glutathione, pH=8.0 in the elution buffer.

GENE INFORMATION

Gene Name

CDC5L CDC5 cell division cycle 5-like (S. pombe) [Homo sapiens]

Official Symbol

CDC5L

Synonyms

CDC5L; CDC5 cell division cycle 5-like (S. pombe); CDC5 (cell division cycle 5, S. pombe, homolog) like; cell division cycle 5-like protein; CDC5; CEF1; hCDC5; PCDC5RP; Cdc5-related protein; pombe cdc5-related protein; dJ319D22.1 (CDC5-like protein); CDC5-LIKE; dJ319D22.1; KIAA0432;

Gene ID

988

 Tel: 1-631-559-9269 1-516-512-3133

 Email: info@creative-biomart.com  Fax: 1-631-938-8127

 45-1 Ramsey Road, Shirley, NY 11967, USA

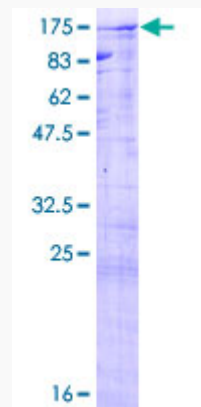
mRNA Refseq [NM_001253](#)

Protein Refseq [NP_001244](#)

MIM [602868](#)

UniProt ID [Q99459](#)

**Quality Control
Testing**



12.5% SDS-PAGE Stained with Coomassie Blue.

 Tel: 1-631-559-9269 1-516-512-3133

 Email: info@creative-biomart.com  Fax: 1-631-938-8127

 45-1 Ramsey Road, Shirley, NY 11967, USA