

Recombinant Human CDC5L Protein, Myc/DDK-tagged, C13 and N15-labeled

Cat. No. CDC5L-803H Lot. No. (See product label)

SPECIFICATION

Product Overview

CDC5L MS Standard C13 and N15-labeled recombinant protein (NP_001244) with a C-terminal MYC/DDK tag, was expressed in HEK293 cells.

Species

Human

Source

HEK293

Description

The protein encoded by this gene shares a significant similarity with *Schizosaccharomyces pombe* *cdc5* gene product, which is a cell cycle regulator important for G2/M transition. This protein has been demonstrated to act as a positive regulator of cell cycle G2/M progression. It was also found to be an essential component of a non-snRNA spliceosome, which contains at least five additional protein factors and is required for the second catalytic step of pre-mRNA splicing.

Molecular Mass

92.3 kDa

AA Sequence

MPRIMIKGGVWRNTEDEILKAAVMKYGKNQWSRIASLLHRKSAKQCKARWYEWLD
PSIKKTEWSREEEKLLHLAKLMPTQWRRTIAPIIIGRTAAQCLEHYEFLLDKAAQRDNE
EETDDPRKLPGEIDPNPETKPARPDPIDMDELEMLSEARARLANTQGKKAKRK
AREKQLEEARRLAALQKRRELRAAGIEIQKKRKRKRGVDYNAEIPFEKKPALGFYDT
SEENYQALDADFRKLRQQDLGELRSEKEGRDRKKDKQHLKRKESDLPSAILQTS
GVSEFTKKRSKLVLPAPQISDAELQEVVKVGQASEIARQTAEEESGITNSASSTLLSEY
NVTNNSVALRTPRTPASQDRILQEAQNLMALTNVDTPLKGGGLNTPLHESDFSGVTP

 Tel: 1-631-559-9269 1-516-512-3133

 Email: info@creative-biomart.com  Fax: 1-631-938-8127

 45-1 Ramsey Road, Shirley, NY 11967, USA

QRQVVQTPNTVLSTPFRTPSNGAEGTTPRSGTTPKPVINSTPGRTPLRDKLNINPED
 GMADYS DPSYVKQMERESREHLRLGLLGLPAPKNDFEIVLPENAEKELEEREIDDTY
 IEDAADV DARKQAIRDAERVKEMKRMHKAVQKDLPRPSEVNETILRPLNVEPPLTDL
 QKSEELIKKEMITMLHYDLLHHPYEPSGNKKGKTVGFGTNNSEHITYLEHNPYEKFS
 KEELKKAQDVLVQEMEVVKQGM SHGELSSEAYNQVWEECY SQVLYLPGQSR YTRA
 NLASKKDRIESLEKRLEINRGHMTTEAKRAAKMEKKMKILLGGYQSRAMGLMKQLN
 DLWDQIEQAHLELR TFEELKKHEDSAIPRRLECLKEDVQRQQEREKELQHRYADLLL
 EKETLKS KFTRTRPLEQKLISEEDLAANDILDYKDDDDKV

| | |
|-----------------------|--|
| Purity | > 80% as determined by SDS-PAGE and Coomassie blue staining |
| Stability | Stable for 3 months from receipt of products under proper storage and handling conditions. |
| Storage | Store at -80 centigrade. Avoid repeated freeze-thaw cycles. |
| Concentration | 50 µg/mL as determined by BCA |
| Storage Buffer | 100 mM glycine, 25 mM Tris-HCl, pH 7.3. |

GENE INFORMATION

| | |
|------------------------|--|
| Gene Name | CDC5L cell division cycle 5 like [<i>Homo sapiens</i> (human)] |
| Official Symbol | CDC5L |
| Synonyms | CDC5L; CDC5 cell division cycle 5-like (<i>S. pombe</i>); CDC5 (cell division cycle 5, <i>S. pombe</i> , homolog) like; cell division cycle 5-like protein; CDC5; CEF1; hCDC5; PCDC5RP; Cdc5-related protein; pombe cdc5-related protein; dJ319D22.1 (CDC5-like protein); CDC5-LIKE; dJ319D22.1; KIAA0432; |

 Tel: 1-631-559-9269 1-516-512-3133

 Email: info@creative-biomart.com  Fax: 1-631-938-8127

 45-1 Ramsey Road, Shirley, NY 11967, USA

Gene ID 988

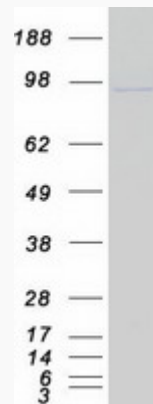
mRNA Refseq [NM_001253](#)

Protein Refseq [NP_001244](#)

MIM 602868

UniProt ID [Q99459](#)

SDS-PAGE



 Tel: 1-631-559-9269 1-516-512-3133

 Email: info@creative-biomart.com  Fax: 1-631-938-8127

 45-1 Ramsey Road, Shirley, NY 11967, USA