

## Recombinant Human CDC7 Protein, GST-Tagged

Cat. No. CDC7-0957H Lot. No. (See product label)

### SPECIFICATION

<b>Product Overview</b>	Human CDC7 partial ORF (NP_003494, 201 a.a. - 300 a.a.) recombinant protein with GST-tag at N-terminal.
<b>Species</b>	Human
<b>Source</b>	Wheat Germ
<b>Description</b>	This gene encodes a cell division cycle protein with kinase activity that is critical for the G1/S transition. The yeast homolog is also essential for initiation of DNA replication as cell division occurs. Overexpression of this gene product may be associated with neoplastic transformation for some tumors. Multiple alternatively spliced transcript variants that encode the same protein have been detected. [provided by RefSeq, Aug 2008]
<b>Molecular Mass</b>	36.63 kDa
<b>AA Sequence</b>	QGTHDTKIELLKVFVQSEAQQERC SQNKSHIITGNKIPLSGPVPKELDQQSTTKASVKR PYTNAQIQIKQGKDGKEGSVGLSVQRSVFGERNFNHSSISH
<b>Applications</b>	Enzyme-linked Immunoabsorbent Assay Western Blot (Recombinant protein) Antibody Production Protein Array
<b>Storage</b>	Store at -80 centigrade. Aliquot to avoid repeated freezing and thawing.

 Tel: 1-631-559-9269 1-516-512-3133

 Email: [info@creative-biomart.com](mailto:info@creative-biomart.com)  Fax: 1-631-938-8127

 45-1 Ramsey Road, Shirley, NY 11967, USA

**Storage Buffer** 50 mM Tris-HCl, 10 mM reduced Glutathione, pH=8.0 in the elution buffer.

## GENE INFORMATION

**Gene Name** CDC7 cell division cycle 7 homolog (*S. cerevisiae*) [ *Homo sapiens* ]

**Official Symbol** CDC7

**Synonyms**

CDC7; cell division cycle 7 homolog (*S. cerevisiae*); CDC7 (cell division cycle 7, *S. cerevisiae*, homolog) like 1, CDC7 cell division cycle 7 (*S. cerevisiae*), CDC7L1, cell division cycle 7 (*S. cerevisiae*); cell division cycle 7-related protein kinase; HsCdc7; Hsk1; huCdc7; CDC7-related kinase; cell division cycle 7-like protein 1; CDC7 (cell division cycle 7, *S. cerevisiae*, homolog)-like 1; CDC7L1; HsCDC7; huCDC7; MGC117361; MGC126237; MGC126238;

**Gene ID** 8317

**mRNA Refseq** NM\_001134419

**Protein Refseq** NP\_001127891

**MIM** 603311

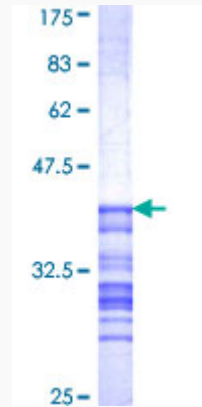
**UniProt ID** O00311

 Tel: 1-631-559-9269 1-516-512-3133

 Email: [info@creative-biomart.com](mailto:info@creative-biomart.com)  Fax: 1-631-938-8127

 45-1 Ramsey Road, Shirley, NY 11967, USA

**Quality Control  
Testing**



12.5% SDS-PAGE Stained with Coomassie Blue.

 Tel: 1-631-559-9269 1-516-512-3133

 Email: [info@creative-biomart.com](mailto:info@creative-biomart.com)  Fax: 1-631-938-8127

 45-1 Ramsey Road, Shirley, NY 11967, USA