

Recombinant Human CDC7 Protein (Met1-Thr232), N-His tagged

Cat. No. CDC7-1187H Lot. No. (See product label)

SPECIFICATION

Product Overview	Recombinant Human CDC7 (Met1-Thr232) fused with the N-His tag was expressed in E. coli.
Species	Human
Source	E.coli
ProteinLength	Met1-Thr232
Form	Lyophilized powder/frozen liquid
Molecular Mass	28.79 kDa
Purity	>90% as determined by SDS-PAGE.
Notes	For research use only.
Storage	Use a manual defrost freezer and avoid repeated freeze thaw cycles. Store at 2 to 8 centigrade for one week. Store at -20 to -80 centigrade for twelve months from the date of receipt.
Storage Buffer	0.01M PBS, pH 7.4, 0.02% NLS
Reconstitution	Reconstitute in sterile water for a stock solution.

 Tel: 1-631-559-9269 1-516-512-3133

 Email: info@creative-biomart.com  Fax: 1-631-938-8127

 45-1 Ramsey Road, Shirley, NY 11967, USA

Shipping They are shipped out with dry ice/blue ice unless customers require otherwise.

GENE INFORMATION

Gene Name CDC7 cell division cycle 7 homolog (*S. cerevisiae*) [*Homo sapiens* (human)]

Official Symbol CDC7

Synonyms

CDC7; cell division cycle 7 homolog (*S. cerevisiae*); CDC7 (cell division cycle 7, *S. cerevisiae*, homolog) like 1, CDC7 cell division cycle 7 (*S. cerevisiae*), CDC7L1, cell division cycle 7 (*S. cerevisiae*); cell division cycle 7-related protein kinase; HsCdc7; Hsk1; huCdc7; CDC7-related kinase; cell division cycle 7-like protein 1; CDC7 (cell division cycle 7, *S. cerevisiae*, homolog)-like 1; CDC7L1; HsCDC7; huCDC7; MGC117361; MGC126237; MGC126238;

Gene ID 8317

mRNA Refseq NM_001134419

Protein Refseq NP_001127891

MIM 603311

UniProt ID O00311

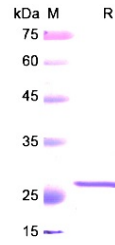
 Tel: 1-631-559-9269 1-516-512-3133

 Email: info@creative-biomart.com  Fax: 1-631-938-8127

 45-1 Ramsey Road, Shirley, NY 11967, USA



SDS-PAGE



Tel: 1-631-559-9269 1-516-512-3133

Email: info@creative-biomart.com Fax: 1-631-938-8127

45-1 Ramsey Road, Shirley, NY 11967, USA