

Active Recombinant Human CDC7/DBF4 Protein, GST-tagged

Cat. No. CDC7-22H Lot. No. (See product label)

SPECIFICATION

Product Overview	Recombinant Human CDC7/DBF4 fused with GST tag at N-terminal was expressed in Insect cells.
Species	Human
Source	Insect Cells
Description	Recombinant full-length human CDC7 and DBF4 proteins were co-expressed by baculovirus in Sf9 insect cells using an N-terminal GST tags. CDC7 is a cell division cycle 7 homolog protein that is critical for the G1/S transition and is also essential for initiation of DNA replication as cell division occurs. CDC7 is expressed in many normal tissues, but the overexpression of CDC7 may be associated with neoplastic transformation for some tumors and transformed cell lines. CDC7/DBF4 kinase promotes S phase by alleviating an inhibitory activity in Mcm4 that evolved to integrate several protein kinase.
Form	50mM Tris-HCl, pH 7.5, 150mM NaCl, 10mM glutathione, 0.1mM EDTA, 0.25mM DTT, 0.1mM PMSF, 25% glycerol.
Bio-activity	8.5 nmol/min/mg
Molecular Mass	CDC7 ~94kDa and DBF4 ~125kDa
Purity	> 85%

 Tel: 1-631-559-9269 1-516-512-3133

 Email: info@creative-biomart.com  Fax: 1-631-938-8127

 45-1 Ramsey Road, Shirley, NY 11967, USA

Applications	Kinase Assay, Western Blot
Stability	1 year at -70 centigrade from the date of shipment.
Storage	Store product at -70 centigrade. For optimal storage, aliquot target into smaller quantities after centrifugation and store at recommended temperature. For most favorable performance, avoid repeated handling and multiple freeze/thaw cycles.
Concentration	0.1 g/μ

GENE INFORMATION

Gene Name	CDC7 cell division cycle 7 homolog (<i>S. cerevisiae</i>) [<i>Homo sapiens</i>]
Official Symbol	CDC7
Synonyms	CDC7; cell division cycle 7 homolog (<i>S. cerevisiae</i>); CDC7 (cell division cycle 7, <i>S. cerevisiae</i> , homolog) like 1 , CDC7 cell division cycle 7 (<i>S. cerevisiae</i>) , CDC7L1, cell division cycle 7 (<i>S. cerevisiae</i>); cell division cycle 7-related protein kinase; HsCdc7; Hsk1; huCdc7; CDC7-related kinase; cell division cycle 7-like protein 1; CDC7 (cell division cycle 7, <i>S. cerevisiae</i> , homolog)-like 1; CDC7L1; HsCDC7; huCDC7; MGC117361; MGC126237; MGC126238;
Gene ID	8317
mRNA Refseq	NM_001134419
Protein Refseq	NP_001127891
MIM	603311

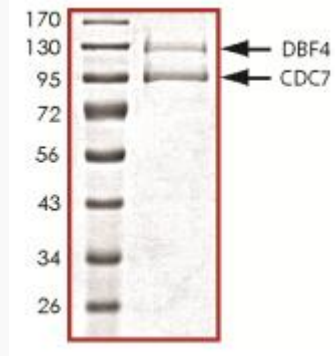
 Tel: 1-631-559-9269 1-516-512-3133

 Email: info@creative-biomart.com  Fax: 1-631-938-8127

 45-1 Ramsey Road, Shirley, NY 11967, USA

UniProt ID

O00311



 Tel: 1-631-559-9269 1-516-512-3133

 Email: info@creative-biomart.com  Fax: 1-631-938-8127

 45-1 Ramsey Road, Shirley, NY 11967, USA