

Recombinant Human CDC73 Protein, GST-Tagged

Cat. No. CDC73-0959H Lot. No. (See product label)

SPECIFICATION

Product Overview	Human CDC73 full-length ORF (NP_078805.3, 1 a.a. - 531 a.a.) recombinant protein with GST-tag at N-terminal.
Species	Human
Source	Wheat Germ
Description	This gene encodes a tumor suppressor that is involved in transcriptional and post-transcriptional control pathways. The protein is a component of the the PAF protein complex, which associates with the RNA polymerase II subunit POLR2A and with a histone methyltransferase complex. This protein appears to facilitate the association of 3' mRNA processing factors with actively-transcribed chromatin. Mutations in this gene have been linked to hyperparathyroidism-jaw tumor syndrome, familial isolated hyperparathyroidism, and parathyroid carcinoma. [provided by RefSeq, Jul 2009]
Molecular Mass	87 kDa
AA Sequence	MADVLSVLRQYNIQKKEIVVKGDEVIFGEFSWPKNVKTNYVVWGTGKEGQPREYYT LDSILFLLNNVHLSHPVYVRRRAATENIPVVRPDRKDLLGYLNGEASTSASIDRSAPL EIGLQRSTQVKRAADEVLAEAKKPRIEDEECVRLDKERLAARLEGHKEGIVQTEQIRS LSEAMSVEKIAAIKAKIMAKKRSTIKTDLDDITALKQRSFVDAEVDVTRDIVSRERVW RTRTTILQSTGKNFSKNIFAILQSVKAREEGRAPEQRPAPNAAPVDPTLRTKQPIAA YNYRDQERFKGKEETEGFKIDTMGTYHGMTLKS VTEGASARKTQTPAAQPVPRPVS QARPPPNQKKGSRTPIIIIPAATTSLITMLNAKDLLQDLKFVPSDEKKKQGCQRENETL

 Tel: 1-631-559-9269 1-516-512-3133

 Email: info@creative-biomart.com  Fax: 1-631-938-8127

 45-1 Ramsey Road, Shirley, NY 11967, USA



IQRRKDQMPPGGTAISVTPYRVVDQPLKMPQDWRVAVFVQGPAAWQFKGWP
WLLPDGSPVDIFAKIKAFHLKYDEVRLDPNVQKWDVTVLELSYHKRHLDRPVFLRFW
ETLDRYMVKHKSHLRF

Applications
Enzyme-linked Immunoabsorbent Assay
Western Blot (Recombinant protein)
Antibody Production
Protein Array

Storage Store at -80 centigrade. Aliquot to avoid repeated freezing and thawing.

Storage Buffer 50 mM Tris-HCl, 10 mM reduced Glutathione, pH=8.0 in the elution buffer.

GENE INFORMATION

Gene Name CDC73 cell division cycle 73, Paf1/RNA polymerase II complex component, homolog (S. cerevisiae) [Homo sapiens]

Official Symbol CDC73

Synonyms CDC73; cell division cycle 73, Paf1/RNA polymerase II complex component, homolog (S. cerevisiae); C1orf28, chromosome 1 open reading frame 28, HRPT2, hyperparathyroidism 2 (with jaw tumor); parafibromin; hyperparathyroidism 2 protein; cell division cycle protein 73 homolog; HYX; HPTJT; HRPT2; C1orf28; FLJ23316;

Gene ID 79577

mRNA Refseq NM_024529

Protein Refseq NP_078805

Tel: 1-631-559-9269 1-516-512-3133

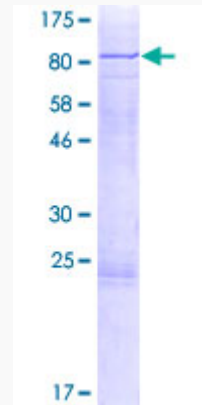
Email: info@creative-biomart.com Fax: 1-631-938-8127

45-1 Ramsey Road, Shirley, NY 11967, USA

MIM 607393

UniProt ID Q6P1J9

**Quality Control
Testing**



12.5% SDS-PAGE Stained with Coomassie Blue.

 Tel: 1-631-559-9269 1-516-512-3133

 Email: info@creative-biomart.com  Fax: 1-631-938-8127

 45-1 Ramsey Road, Shirley, NY 11967, USA