

Recombinant Human CDC73 Protein (Met1-Glu260), N-His tagged

Cat. No. CDC73-5180H Lot. No. (See product label)

SPECIFICATION

Product Overview	Recombinant human CDC73 (Met1-Glu260) fused with the N-terminal His tag was expressed in E. coli.
Species	Human
Source	E.coli
ProteinLength	Met1-Glu260
Form	Lyophilized powder/frozen liquid
Molecular Mass	28.6 kDa
Purity	>90% as determined by SDS-PAGE.
Notes	For research use only.
Storage	Use a manual defrost freezer and avoid repeated freeze thaw cycles. Store at 2 to 8 centigrade for one week. Store at -20 to -80 centigrade for twelve months from the date of receipt.
Storage Buffer	Supplied as solution form in PBS or lyophilized from PBS.
Reconstitution	Reconstitute in sterile water for a stock solution.

 Tel: 1-631-559-9269 1-516-512-3133

 Email: info@creative-biomart.com  Fax: 1-631-938-8127

 45-1 Ramsey Road, Shirley, NY 11967, USA

Shipping They are shipped out with dry ice/blue ice unless customers require otherwise.

GENE INFORMATION

Gene Name	CDC73 cell division cycle 73, Paf1/RNA polymerase II complex component, homolog (S. cerevisiae) [Homo sapiens (human)]
Official Symbol	CDC73
Synonyms	CDC73; cell division cycle 73, Paf1/RNA polymerase II complex component, homolog (S. cerevisiae); C1orf28, chromosome 1 open reading frame 28, HRPT2, hyperparathyroidism 2 (with jaw tumor); parafibromin; hyperparathyroidism 2 protein; cell division cycle protein 73 homolog; HYX; HPTJT; HRPT2; C1orf28; FLJ23316;
Gene ID	79577
mRNA Refseq	NM_024529
Protein Refseq	NP_078805
MIM	607393
UniProt ID	Q6P1J9

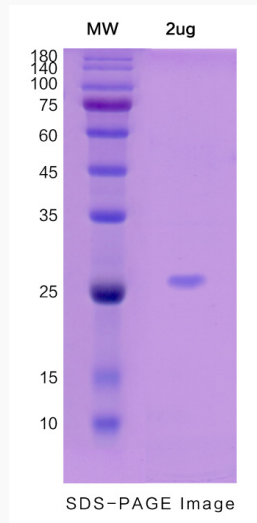
 Tel: 1-631-559-9269 1-516-512-3133

 Email: info@creative-biomart.com  Fax: 1-631-938-8127

 45-1 Ramsey Road, Shirley, NY 11967, USA



SDS-PAGE



Tel: 1-631-559-9269 1-516-512-3133

Email: info@creative-biomart.com Fax: 1-631-938-8127

45-1 Ramsey Road, Shirley, NY 11967, USA