

Recombinant Human CDCA5 Protein, GST-Tagged

Cat. No. CDCA5-0962H **Lot. No.** (See product label)

SPECIFICATION

Product Overview	Human CDCA5 full-length ORF (NP_542399.1, 1 a.a. - 252 a.a.) recombinant protein with GST-tag at N-terminal.
Species	Human
Source	Wheat Germ
Description	CDCA5 (Cell Division Cycle Associated 5) is a Protein Coding gene. Among its related pathways are CDK-mediated phosphorylation and removal of Cdc6 and Mitotic Metaphase and Anaphase. GO annotations related to this gene include chromatin binding.
Molecular Mass	54 kDa
AA Sequence	MSGRRTRSGGAAQRSGPRAPSPTKPLRRSQRKSGSELP SILPEIWPKTPSAAAVRK PIVLKRIVAHAVEVPAVQSPRRSPRISFFLEKENEPPGRELT KEDLFKTHSVPATPTST PVPNPEAESSSKEGELDARDLEMSKKVRRSYSRLET LGSASTSTPGRRSCFGFEGL LGAEDLSGVSPVVC SKLTEVPRVCAKPWAPDMTLPGISPPPEKQKRKKKKMPEILKT ELDEWAAAMNAEFEEAEQFDLLVE
Applications	Enzyme-linked Immunoabsorbent Assay Western Blot (Recombinant protein) Antibody Production Protein Array

 Tel: 1-631-559-9269 1-516-512-3133

 Email: info@creative-biomart.com  Fax: 1-631-938-8127

 45-1 Ramsey Road, Shirley, NY 11967, USA

Storage Store at -80 centigrade. Aliquot to avoid repeated freezing and thawing.

Storage Buffer 50 mM Tris-HCl, 10 mM reduced Glutathione, pH=8.0 in the elution buffer.

GENE INFORMATION

Gene Name CDCA5 cell division cycle associated 5 [Homo sapiens]

Official Symbol CDCA5

Synonyms CDCA5; cell division cycle associated 5; sororin; p35; cell division cycle-associated protein 5; SORORIN; MGC16386;

Gene ID 113130

mRNA Refseq NM_080668

Protein Refseq NP_542399

MIM 609374

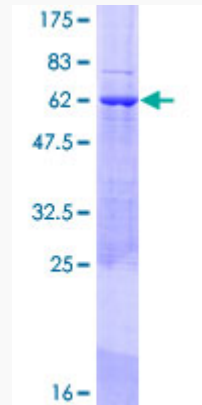
UniProt ID Q96FF9

 Tel: 1-631-559-9269 1-516-512-3133

 Email: info@creative-biomart.com  Fax: 1-631-938-8127

 45-1 Ramsey Road, Shirley, NY 11967, USA

**Quality Control
Testing**



12.5% SDS-PAGE Stained with Coomassie Blue.

 Tel: 1-631-559-9269 1-516-512-3133

 Email: info@creative-biomart.com  Fax: 1-631-938-8127

 45-1 Ramsey Road, Shirley, NY 11967, USA