

Recombinant Human CDCA8 Protein, GST-Tagged

Cat. No. CDCA8-0965H **Lot. No.** (See product label)

SPECIFICATION

| | |
|-------------------------|--|
| Product Overview | Human CDCA8 full-length ORF (AAH16944.1, 1 a.a. - 280 a.a.) recombinant protein with GST-tag at N-terminal. |
| Species | Human |
| Source | Wheat Germ |
| Description | This gene encodes a component of the chromosomal passenger complex. This complex is an essential regulator of mitosis and cell division. This protein is cell-cycle regulated and is required for chromatin-induced microtubule stabilization and spindle formation. Alternate splicing results in multiple transcript variants. Pseudogenes of this gene are found on chromosomes 7, 8 and 16. [provided by RefSeq, Apr 2013] |
| Molecular Mass | 56.32 kDa |
| AA Sequence | MAPRKGSSRVANTNSLRRRKLASFLKDFDREVEIRIKQIESDRQNLLKEVDNLYNIEIL RLPKALREMNWLDYFALGGNKQALEEAATADLDITEINKLTAEAIQTPLKSAKTRKVI QVDEMIVEEEEEENERKNLQATARVKRCPPSKKRTQSIQGGKGGKRSSRANTVTPA VGRLEVSMVKPTPGLTPRFDSRVFKTPGLRTPAAGERIYNISGNGSPLADSKEIFLTV PVGGGESLRLASDLQRHSIAQLDPEALGNIKKLSNRLAQICSSMRTHK |
| Applications | Enzyme-linked Immunoabsorbent Assay Western Blot (Recombinant protein) Antibody Production Protein Array |

 Tel: 1-631-559-9269 1-516-512-3133

 Email: info@creative-biomart.com  Fax: 1-631-938-8127

 45-1 Ramsey Road, Shirley, NY 11967, USA

Storage Store at -80 centigrade. Aliquot to avoid repeated freezing and thawing.

Storage Buffer 50 mM Tris-HCl, 10 mM reduced Glutathione, pH=8.0 in the elution buffer.

GENE INFORMATION

Gene Name CDCA8 cell division cycle associated 8 [Homo sapiens]

Official Symbol CDCA8

Synonyms CDCA8; cell division cycle associated 8; borealin; BOR; DasraB; FLJ12042; MESRGP; Dasra B; dasra-B; hDasra-B; cell division cycle-associated protein 8; pluripotent embryonic stem cell-related gene 3 protein; BOREALIN; FLJ10468;

Gene ID 55143

mRNA Refseq NM_001256875

Protein Refseq NP_001243804

MIM 609977

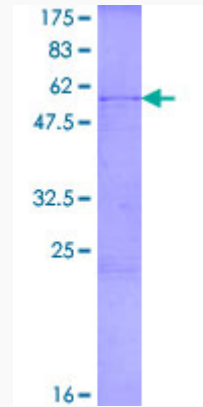
UniProt ID Q53HL2

 Tel: 1-631-559-9269 1-516-512-3133

 Email: info@creative-biomart.com  Fax: 1-631-938-8127

 45-1 Ramsey Road, Shirley, NY 11967, USA

**Quality Control
Testing**



12.5% SDS-PAGE Stained with Coomassie Blue.

 Tel: 1-631-559-9269 1-516-512-3133

 Email: info@creative-biomart.com  Fax: 1-631-938-8127

 45-1 Ramsey Road, Shirley, NY 11967, USA