

## Recombinant Cynomolgus CDCP1 Protein, Ala29-Thr667, C-His-Avi tagged, Biotinylated

Cat. No. CDCP1-005C Lot. No. (See product label)

### SPECIFICATION

<b>Product Overview</b>	Recombinant Cynomolgus CDCP1-C-His-Avi protein was developed from HEK293 and has a target region of C-His-Avi.
<b>Species</b>	Cynomolgus
<b>Source</b>	HEK293
<b>ProteinLength</b>	Ala29-Thr667
<b>Description</b>	This gene encodes a transmembrane protein which contains three extracellular CUB domains and acts as a substrate for Src family kinases. The protein plays a role in the tyrosine phosphorylation-dependent regulation of cellular events that are involved in tumor invasion and metastasis. Alternative splicing results in multiple transcript variants of this gene.
<b>Conjugation/Label</b>	Biotin
<b>Form</b>	Lyophilised
<b>Endotoxin</b>	Endotoxin level was found to be less than 0.1 ng/μg (1 EU/μg).
<b>Notes</b>	FOR RESEARCH USE ONLY (RUO).
<b>Storage</b>	The lyophilized protein is stable for at least 1 year from date of receipt at -20

 Tel: 1-631-559-9269 1-516-512-3133

 Email: [info@creative-biomart.com](mailto:info@creative-biomart.com)  Fax: 1-631-938-8127

 45-1 Ramsey Road, Shirley, NY 11967, USA

centigrade.

**Storage Buffer**

Lyophilised from 0.2 µm filtered PBS solution pH 7.4. Upon receipt centrifuge vial to ensure maximal product extraction, recommended: 20 sec, 5K RPM

**Conjugation**

Biotin

**GENE INFORMATION****Gene Name**CDCP1 CUB domain containing protein 1 [ *Macaca mulatta* (Rhesus monkey) ]**Official Symbol**

CDCP1

**Synonyms**

CDCP1; CUB domain containing protein 1;

**Gene ID**

714333

**mRNA Refseq**

XM\_001114659

**Protein Refseq**

XP\_001114659

**UniProt ID**

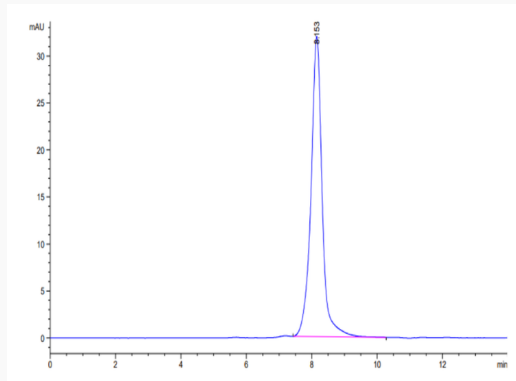
F6TPM5

 Tel: 1-631-559-9269 1-516-512-3133 Email: [info@creative-biomart.com](mailto:info@creative-biomart.com)  Fax: 1-631-938-8127 45-1 Ramsey Road, Shirley, NY 11967, USA

**Biotinylated  
Cynomolgus CDCP1  
on Tris-Bis PAGE  
under reduced  
condition. The purity  
is greater than 95%.**




**The purity of  
Biotinylated  
Cynomolgus CDCP1  
is greater than 95%  
as determined by  
SEC- HPLC.**



**Immobilized Anti-  
CDCP1 Antibody,  
hFc Tag at 2 µg/mL  
(100 µL/Well) on the  
plate. Dose response  
curve for  
Biotinylated**

 Tel: 1-631-559-9269 1-516-512-3133

 Email: [info@creative-biomart.com](mailto:info@creative-biomart.com)  Fax: 1-631-938-8127

 45-1 Ramsey Road, Shirley, NY 11967, USA



**Cynomolgus CDCP1,  
His Tag with the  
EC50 of 0.16 µg/mL  
determined by  
ELISA.**

 Tel: 1-631-559-9269 1-516-512-3133

 Email: [info@creative-biomart.com](mailto:info@creative-biomart.com)  Fax: 1-631-938-8127

 45-1 Ramsey Road, Shirley, NY 11967, USA