

Recombinant Human CDCP1 protein, His-Avi-tagged, Biotinylated

Cat. No. CDCP1-058H **Lot. No.** (See product label)

SPECIFICATION

Product Overview	Biotinylated Recombinant Human CDCP1 protein(Q9H5V8-1)(Phe30-Leu666), fused with C-terminal His and Avi tag, was expressed in HEK293.
Species	Human
Source	HEK293
ProteinLength	Phe30-Leu666
Tag	C-His-Avi
Conjugation/Label	Biotin
Form	Lyophilized from 0.22µm filtered solution in PBS (pH 7.4). Normally 5% trehalose is added as protectant before lyophilization.
Bio-activity	Immobilized Biotinylated Human CDCP1, His Tag at 0.5ug/ml (100ul/Well) on streptavidin (5ug/ml) precoated plate. Dose response curve for Anti-CDCP1 Antibody, hFc Tag with the EC50 of 3.1ng/ml determined by ELISA.
Molecular Mass	The protein has a predicted MW of 74.6 kDa. Due to glycosylation, the protein migrates to 85-100 kDa based on Tris-Bis PAGE result.
Endotoxin	Less than 1EU per µg by the LAL method.

 Tel: 1-631-559-9269 1-516-512-3133

 Email: info@creative-biomart.com  Fax: 1-631-938-8127

 45-1 Ramsey Road, Shirley, NY 11967, USA

Purity	> 95% as determined by Tris-Bis PAGE;> 95% as determined by HPLC
Storage	Reconstituted protein stable at -80°C for 12 months, 4°C for 1 week. Use a manual defrost freezer and avoid repeated freeze-thaw cycles.
Reconstitution	Centrifuge tubes before opening. Reconstituting to a concentration more than 100 µg/ml is recommended. Dissolve the lyophilized protein in distilled water.
Conjugation	Biotin

GENE INFORMATION

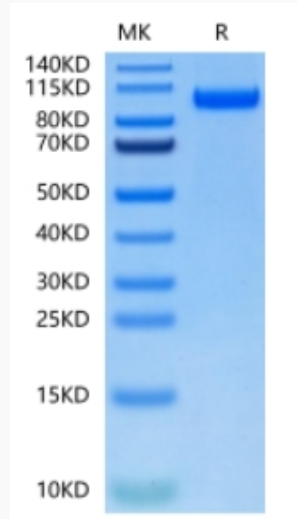
Gene Name	CDCP1 CUB domain containing protein 1 [Homo sapiens]
Official Symbol	CDCP1
Synonyms	CDCP1; CUB domain containing protein 1; CUB domain-containing protein 1; CD318; SIMA135; membrane glycoprotein gp140; transmembrane and associated with src kinases; subtractive immunization M plus HEp3-associated 135 kDa protein; TRASK;
Gene ID	64866
mRNA Refseq	NM_022842
Protein Refseq	NP_073753
MIM	611735
UniProt ID	Q9H5V8

 Tel: 1-631-559-9269 1-516-512-3133

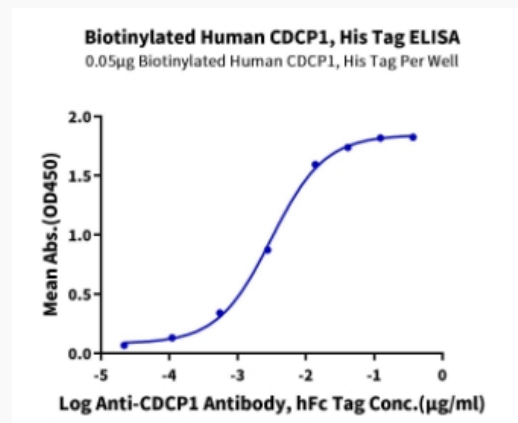
 Email: info@creative-biomart.com  Fax: 1-631-938-8127

 45-1 Ramsey Road, Shirley, NY 11967, USA

Tris-Bis PAGE



ELISA Data



 Tel: 1-631-559-9269 1-516-512-3133

 Email: info@creative-biomart.com  Fax: 1-631-938-8127

 45-1 Ramsey Road, Shirley, NY 11967, USA