

Recombinant Human CDCP1 Protein, GST-Tagged

Cat. No. CDCP1-0967H **Lot. No.** (See product label)

SPECIFICATION

Product Overview	Human CDCP1 full-length ORF (NP_835488.1, 1 a.a. - 343 a.a.) recombinant protein with GST-tag at N-terminal.
Species	Human
Source	Wheat Germ
Description	This gene encodes a transmembrane protein which contains three extracellular CUB domains and acts as a substrate for Src family kinases. The protein plays a role in the tyrosine phosphorylation-dependent regulation of cellular events that are involved in tumor invasion and metastasis. Alternative splicing results in multiple transcript variants of this gene. [provided by RefSeq, May 2013]
Molecular Mass	64.2 kDa
AA Sequence	MAGLNCGVSIALLGVLLLGAARLPRGAEAFEIALPRESNITVLIKLGTPDLLAKPCYIVIS KRHITMLSIKSGERIVFTFSCQSPENHFVIEIQKNIDCMMSGPCPFGEVQLQPSTLLPT LNRTFIWDVKAHKSIGLELQFSIPRLRQIGPGESCPDGVTHSISGRIDATVVRIGTFCS NGTVSRIKMQEGVKMALHLPWFHPRNVSGFSIANRSSIKRLCIIESVFEGEGSATLMS ANYPEGFPEDELMTWQFVVPAPHLRASVSFLNFNLSNCERKEERVEYYIPGSTTNPE VFKLEDKQPGNMAGNFNLSLQGCDQDAQSPGILRLQFQVLVQHPQNESSE
Applications	Enzyme-linked Immunoabsorbent Assay Western Blot (Recombinant protein) Antibody Production

 Tel: 1-631-559-9269 1-516-512-3133

 Email: info@creative-biomart.com  Fax: 1-631-938-8127

 45-1 Ramsey Road, Shirley, NY 11967, USA

Protein Array

Storage	Store at -80 centigrade. Aliquot to avoid repeated freezing and thawing.
Storage Buffer	50 mM Tris-HCl, 10 mM reduced Glutathione, pH=8.0 in the elution buffer.

GENE INFORMATION

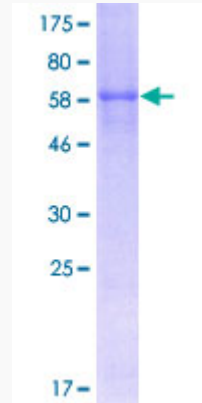
Gene Name	CDCP1 CUB domain containing protein 1 [Homo sapiens]
Official Symbol	CDCP1
Synonyms	CDCP1; CUB domain containing protein 1; CUB domain-containing protein 1; CD318; SIMA135; membrane glycoprotein gp140; transmembrane and associated with src kinases; subtractive immunization M plus HEP3-associated 135 kDa protein; TRASK;
Gene ID	64866
mRNA Refseq	NM_022842
Protein Refseq	NP_073753
MIM	611735
UniProt ID	Q9H5V8

 Tel: 1-631-559-9269 1-516-512-3133

 Email: info@creative-biomart.com  Fax: 1-631-938-8127

 45-1 Ramsey Road, Shirley, NY 11967, USA

**Quality Control
Testing**



12.5% SDS-PAGE Stained with Coomassie Blue.

 Tel: 1-631-559-9269 1-516-512-3133

 Email: info@creative-biomart.com  Fax: 1-631-938-8127

 45-1 Ramsey Road, Shirley, NY 11967, USA