

Recombinant Rhesus macaque CDCP1 protein, His-tagged

Cat. No. CDCP1-096R Lot. No. (See product label)

SPECIFICATION

Product Overview	Recombinant Rhesus macaque CDCP1 protein(XP_001114659.1)(Ala29-Thr667), fused with C-terminal His tag, was expressed in HEK293.
Species	Rhesus macaque
Source	HEK293
ProteinLength	Ala29-Thr667
Tag	C-His
Form	Lyophilized from 0.22µm filtered solution in PBS (pH 7.4). Normally 5% trehalose is added as protectant before lyophilization.
Bio-activity	Immobilized Rhesus macaque CDCP1 at 5ug/ml (100ul/Well) on the plate. Dose response curve for Anti-CDCP1 Antibody, hFc Tag with the EC50 of 12.6ng/ml determined by ELISA.
Molecular Mass	The protein has a predicted MW of 73.2 kDa. Due to glycosylation, the protein migrates to 80-115 kDa based on Tris-Bis PAGE result.
Endotoxin	Less than 1EU per µg by the LAL method.
Purity	> 95% as determined by Tris-Bis PAGE;> 95% as determined by HPLC

 Tel: 1-631-559-9269 1-516-512-3133

 Email: info@creative-biomart.com  Fax: 1-631-938-8127

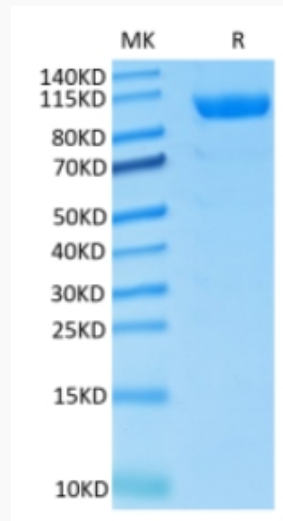
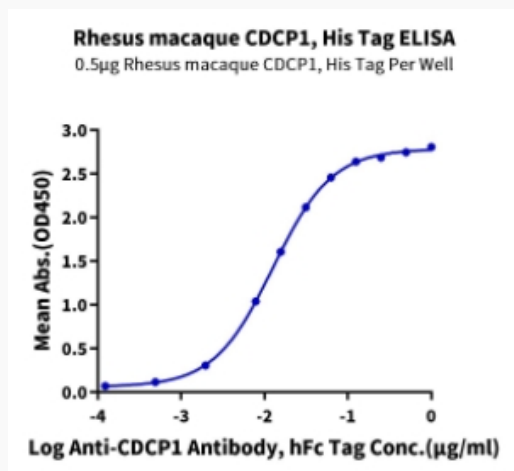
 45-1 Ramsey Road, Shirley, NY 11967, USA

Storage

Reconstituted protein stable at -80°C for 12 months, 4°C for 1 week. Use a manual defrost freezer and avoid repeated freeze-thaw cycles.

Reconstitution

Centrifuge tubes before opening. Reconstituting to a concentration more than 100 µg/ml is recommended. Dissolve the lyophilized protein in distilled water.

Tris-Bis PAGE

ELISA Data


Tel: 1-631-559-9269 1-516-512-3133

Email: info@creative-biomart.com Fax: 1-631-938-8127

45-1 Ramsey Road, Shirley, NY 11967, USA