

Recombinant Human CDCP1 Protein, His-tagged

Cat. No. CDCP1-132H Lot. No. (See product label)

SPECIFICATION

Product Overview	Recombinant Human CDCP1 Protein with His tag was expressed in E. coli.
Species	Human
Source	E.coli
Description	<p>CUB domain containing protein 1 (CDCP1, SIMA135) is a putative stem cell marker shown in research studies to be highly expressed in some human cancer cells and in both typical and atypical (cancerous) colons. Expression of CDCP1 may be epigenetically regulated, as methylation of promoter CpG sequences results in decreased CDCP1 expression. The corresponding CDCP1 gene encodes a glycoprotein that acts as a complex, multidomain transmembrane antigen. CDCP1 has three extracellular CUB domains that may be involved in cell adhesion or extracellular matrix interactions. Src-family kinases may phosphorylate CDCP1 at five tyrosine residues within its cytoplasmic domain to provide a potential binding site for SH2 domain-containing proteins. CDCP1 is a putative hematopoietic stem cell marker.</p>
Molecular Mass	~65 kDa
AA Sequence	<p>FEIALPRESNITVLIKLGTPDLLAKPCYIVISKRHITMLSIKSGERIVFTFSCQSPENHFVI EIQKNIDCMMSGPCPFGEVQLQPSTSLPLNRTFIWDVKAHKSIGLELQFSIPRLRQIG PGESCPDGVTHSISGRIDATVVRIGTFCSNGTVSRIKMQEGVKMALHLPWFHPRNVS GFSIANRSSIKRLCIIESVFEGEGSATLMSANYPEGFPEDELMTWQFVVPAHLRASVS</p>

 Tel: 1-631-559-9269 1-516-512-3133

 Email: info@creative-biomart.com  Fax: 1-631-938-8127

 45-1 Ramsey Road, Shirley, NY 11967, USA

FLNFNLSNCERKEERVEYYIPGSTTNPEVFKLEDKQPGNMAGNFNLSLQGCDQDAQ
 SPGILRLQFQVLVQHPQNESNKIYVVDLSNERAMSLTIEPRPVKQSRKFVPGCFVCL
 ESRTCSSNLTLTSGSKHKISFLCDDLTRLWMNVEKTISCTDHRVCQRKSYSLSLQVPSD
 ILHLPVELHDFSWKLLVPKDRLSLVLVPAQKLQQTHEKPCNTSFSYLVASAIPSQDL
 YFGSFCPGGSIKQIQVKQNISVTLRTFAPSFQQEASRQGLTVSFIPYFKEEGVFTVTP
 DTKSKVYL RTPNWDRGLPSLTSVSWNISVPRDQVACLTFKERSGVVCQTGRAFMII
 QEQRTRAEEIFSLDEDVLPKPSFHHSFWVNISNCSPTSGKQLDLLFSVTLTPRTVD
 LT

Purity	Transferred into competent cells and the supernatant was purified by NI column affinity chromatography and the purity is > 85% (by SDS-PAGE).
Notes	For research use only, not for use in diagnostic procedure.
Storage	Store at 4 centigrade short term. Aliquot and store at -20 centigrade long term. Avoid freeze-thaw cycles.
Storage Buffer	PBS, 4M Urea, pH7.4

GENE INFORMATION

Gene Name	CDCP1 CUB domain containing protein 1 [Homo sapiens (human)]
Official Symbol	CDCP1
Synonyms	CDCP1; CUB domain containing protein 1; CUB domain-containing protein 1; CD318; SIMA135; membrane glycoprotein gp140; transmembrane and associated with src kinases; subtractive immunization M plus HEp3-associated 135 kDa protein; TRASK;
Gene ID	64866

 Tel: 1-631-559-9269 1-516-512-3133

 Email: info@creative-biomart.com  Fax: 1-631-938-8127

 45-1 Ramsey Road, Shirley, NY 11967, USA

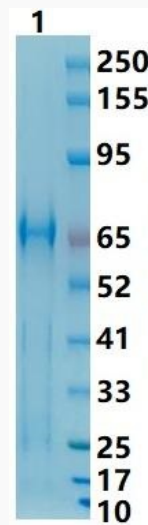
mRNA Refseq [NM_022842](#)

Protein Refseq [NP_073753](#)

MIM [611735](#)

UniProt ID [Q9H5V8](#)

SDS-PAGE



 Tel: 1-631-559-9269 1-516-512-3133

 Email: info@creative-biomart.com  Fax: 1-631-938-8127

 45-1 Ramsey Road, Shirley, NY 11967, USA