

Recombinant Human CDCP1 protein, His-tagged

Cat. No. CDCP1-1377H Lot. No. (See product label)

SPECIFICATION

Product Overview	Recombinant Human CDCP1 protein(Q9H5V8-1)(Phe30-Arg368), fused with C-terminal His tag, was expressed in HEK293.
Species	Human
Source	C-His
ProteinLength	Phe30-Arg368
Tag	C-His
Form	Supplied as 0.22µm filtered solution in 20mM PBS (pH 7.4).
Bio-activity	Immobilized Human CDCP1 (30-368), His Tag at 2µg/ml (100µl/well) on the plate. Dose response curve for Anti-CDCP1 Antibody, hFc Tag with the EC50 of 13.2ng/ml determined by ELISA.
Molecular Mass	The protein has a predicted MW of 39.03 kDa. Due to glycosylation, the protein migrates to 60-70 kDa based on Tris-Bis PAGE result.
Endotoxin	Less than 1EU per µg by the LAL method.
Purity	> 95% as determined by Tris-Bis PAGE; > 95% as determined by HPLC.
Storage	Valid for 12 months from date of receipt when stored at -80°C.;Recommend to aliquot

 Tel: 1-631-559-9269 1-516-512-3133

 Email: info@creative-biomart.com  Fax: 1-631-938-8127

 45-1 Ramsey Road, Shirley, NY 11967, USA

the protein into smaller quantities for optimal storage. Please do not repeated freeze-thaw cycles.

Reconstitution

It is recommended that sterile water be added to the vial to prepare a stock solution of 0.2 ug/ul. Centrifuge the vial at 4°C before opening to recover the entire contents.

GENE INFORMATION

Gene Name CDCP1 CUB domain containing protein 1 [Homo sapiens]

Official Symbol CDCP1

Synonyms CDCP1; CUB domain containing protein 1; CUB domain-containing protein 1; CD318; SIMA135; membrane glycoprotein gp140; transmembrane and associated with src kinases; subtractive immunization M plus HEp3-associated 135 kDa protein; TRASK;

Gene ID 64866

mRNA Refseq NM_022842

Protein Refseq NP_073753

MIM 611735

UniProt ID Q9H5V8

 Tel: 1-631-559-9269 1-516-512-3133

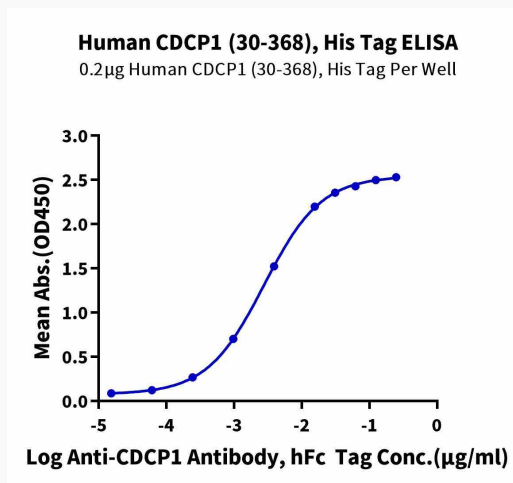
 Email: info@creative-biomart.com  Fax: 1-631-938-8127

 45-1 Ramsey Road, Shirley, NY 11967, USA

Tris-Bis PAGE



ELISA



Tel: 1-631-559-9269 1-516-512-3133

Email: info@creative-biomart.com Fax: 1-631-938-8127

45-1 Ramsey Road, Shirley, NY 11967, USA