

# Recombinant Human CDCP1 Protein (Phe30-Ser341), C-His tagged

Cat. No. CDCP1-1502H Lot. No. (See product label)

## SPECIFICATION

<b>Product Overview</b>	Recombinant human CDCP1 (Phe30-Ser341) fused with the C-terminal His tag was expressed in Mammalian cells.
<b>Species</b>	Human
<b>Source</b>	Mammalian Cells
<b>ProteinLength</b>	Phe30-Ser341
<b>Form</b>	Lyophilized powder/frozen liquid
<b>Molecular Mass</b>	34.32 kDa
<b>Purity</b>	>90% as determined by SDS-PAGE.
<b>Notes</b>	For research use only.
<b>Storage</b>	Use a manual defrost freezer and avoid repeated freeze thaw cycles. Store at 2 to 8 centigrade for one week. Store at -20 to -80 centigrade for twelve months from the date of receipt.
<b>Storage Buffer</b>	Supplied as solution form in PBS or lyophilized from PBS.
<b>Reconstitution</b>	Reconstitute in sterile water for a stock solution.

 Tel: 1-631-559-9269 1-516-512-3133

 Email: [info@creative-biomart.com](mailto:info@creative-biomart.com)  Fax: 1-631-938-8127

 45-1 Ramsey Road, Shirley, NY 11967, USA

**Shipping** They are shipped out with dry ice/blue ice unless customers require otherwise.

## GENE INFORMATION

**Gene Name** CDCP1 CUB domain containing protein 1 [ Homo sapiens (human) ]

**Official Symbol** CDCP1

**Synonyms** CDCP1; CUB domain containing protein 1; CUB domain-containing protein 1; CD318; SIMA135; membrane glycoprotein gp140; transmembrane and associated with src kinases; subtractive immunization M plus HEp3-associated 135 kDa protein; TRASK;

**Gene ID** 64866

**mRNA Refseq** NM\_022842

**Protein Refseq** NP\_073753

**MIM** 611735

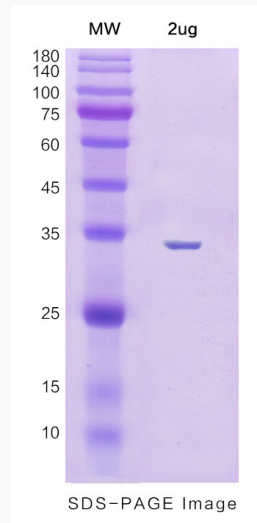
**UniProt ID** Q9H5V8

 Tel: 1-631-559-9269 1-516-512-3133

 Email: [info@creative-biomart.com](mailto:info@creative-biomart.com)  Fax: 1-631-938-8127

 45-1 Ramsey Road, Shirley, NY 11967, USA

**SDS-PAGE**



 Tel: 1-631-559-9269 1-516-512-3133

 Email: [info@creative-biomart.com](mailto:info@creative-biomart.com)  Fax: 1-631-938-8127

 45-1 Ramsey Road, Shirley, NY 11967, USA