

Recombinant Rat CDCP1 protein, His-tagged

Cat. No. CDCP1-1612R Lot. No. (See product label)

SPECIFICATION

Product Overview	Recombinant Rat CDCP1 protein(D3ZVA1)(Ser29-Thr666), fused with C-terminal His tag, was expressed in HEK293.
Species	Rat
Source	C-His
ProteinLength	Ser29-Thr666
Tag	C-His
Form	Lyophilized from 0.22µm filtered solution in PBS (pH 7.4). Normally 8% trehalose is added as protectant before lyophilization.
Bio-activity	
Molecular Mass	The protein has a predicted MW of 73.09 kDa. Due to glycosylation, the protein migrates to 90-115 kDa based on Tris-Bis PAGE result.
Endotoxin	Less than 1EU per µg by the LAL method.
Purity	> 95% as determined by Tris-Bis PAGE; > 95% as determined by HPLC.
Storage	Reconstituted protein stable at -80°C for 12 months, 4°C for 1 week. Use a manual defrost freezer and avoid repeated freeze-thaw cycles.

 Tel: 1-631-559-9269 1-516-512-3133

 Email: info@creative-biomart.com  Fax: 1-631-938-8127

 45-1 Ramsey Road, Shirley, NY 11967, USA

Reconstitution Centrifuge tubes before opening. Reconstituting to a concentration more than 100 µg/ml is recommended. Dissolve the lyophilized protein in distilled water.

GENE INFORMATION

Gene Name Cdcp1 CUB domain containing protein 1 [*Rattus norvegicus*]

Official Symbol CDCP1

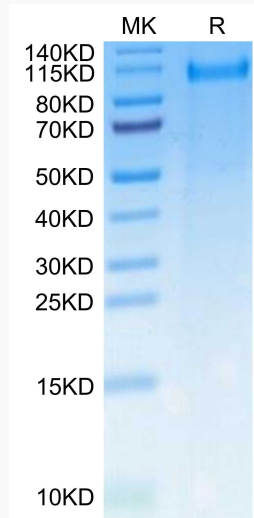
Synonyms CDCP1; CUB domain containing protein 1; CUB domain-containing protein 1; RGD1305578;

Gene ID 301082

mRNA Refseq NM_001106869

Protein Refseq NP_001100339

Tris-Bis PAGE



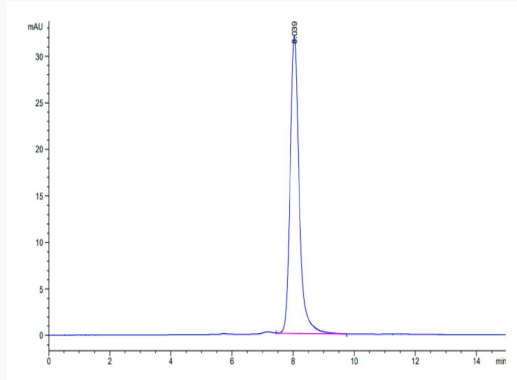
Tel: 1-631-559-9269 1-516-512-3133

Email: info@creative-biomart.com Fax: 1-631-938-8127

45-1 Ramsey Road, Shirley, NY 11967, USA



SEC-HPLC



Tel: 1-631-559-9269 1-516-512-3133

Email: info@creative-biomart.com Fax: 1-631-938-8127

45-1 Ramsey Road, Shirley, NY 11967, USA