

Recombinant Human CDCP1 protein, His & T7-tagged

Cat. No. CDCP1-1786H Lot. No. (See product label)

SPECIFICATION

Product Overview	Recombinant Human CDCP1 aa. (Cys689~Glu836 (Accession # Q9H5V8)) fused with N-terminal His & T7 tag was produced in E. coli cells.
Species	Human
Source	E.coli
ProteinLength	Cys689~Glu836
Description	This gene encodes a transmembrane protein which contains three extracellular CUB domains and acts as a substrate for Src family kinases. The protein plays a role in the tyrosine phosphorylation-dependent regulation of cellular events that are involved in tumor invasion and metastasis. Alternative splicing results in multiple transcript variants of this gene.
Form	Freeze-dried powder
Molecular Mass	25kDa as determined by SDS-PAGE reducing conditions.
Endotoxin	<1.0EU per 1ug (determined by the LAL method)
Purity	>90%
Characteristic	The isoelectric point is 5.9.

 Tel: 1-631-559-9269 1-516-512-3133

 Email: info@creative-biomart.com  Fax: 1-631-938-8127

 45-1 Ramsey Road, Shirley, NY 11967, USA

Applications	SDS-PAGE; WB; ELISA; IP.
Stability	The thermal stability is described by the loss rate of the target protein. The loss rate was determined by accelerated thermal degradation test, that is, incubate the protein at 37°C for 48h, and no obvious degradation and precipitation were observed. (Referring from China Biological Products Standard, which was calculated by the Arrhenius equation.) The loss of this protein is less than 5% within the expiration date under appropriate storage condition.
Storage	Avoid repeated freeze/thaw cycles. Store at 2-8°C for one month. Aliquot and store at -80°C for 12 months.
Storage Buffer	Supplied as lyophilized form in PBS, pH7.4, containing 5% trehalose, 0.01% sarcosyl.
Reconstitution	Reconstitute in sterile PBS, pH7.2-pH7.4.

GENE INFORMATION

Gene Name	CDCP1 CUB domain containing protein 1 [Homo sapiens (human)]
Official Symbol	CDCP1
Synonyms	COL8A2; collagen type VIII alpha 2 chain; FECD; PPCD; FECD1; PPCD2; collagen alpha-2(VIII) chain; collagen VIII, alpha-2 polypeptide; collagen, type VIII, alpha 2; endothelial collagen
Gene ID	64866
mRNA Refseq	NM_022842.4
Protein Refseq	NP_073753.3

 Tel: 1-631-559-9269 1-516-512-3133

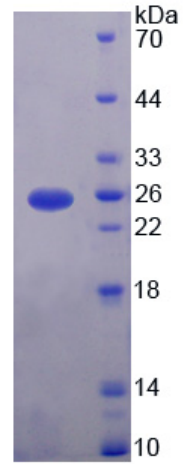
 Email: info@creative-biomart.com  Fax: 1-631-938-8127

 45-1 Ramsey Road, Shirley, NY 11967, USA



UniProt ID

Q9H5V8



15% SDS-PAGE

SDS-PAGE

Tel: 1-631-559-9269 1-516-512-3133

Email: info@creative-biomart.com Fax: 1-631-938-8127

45-1 Ramsey Road, Shirley, NY 11967, USA