

Active Recombinant Full Length Human CDCP1 Protein, C-Flag-tagged

Cat. No. CDCP1-332HFL **Lot. No.** (See product label)

SPECIFICATION

Product Overview	Recombinant Full Length Human CDCP1 Protein, fused to Flag-tag at C-terminus, was expressed in Mammalian cells.
Species	Human
Source	Mammalian Cells
Description	This gene encodes a transmembrane protein which contains three extracellular CUB domains and acts as a substrate for Src family kinases. The protein plays a role in the tyrosine phosphorylation-dependent regulation of cellular events that are involved in tumor invasion and metastasis. Alternative splicing results in multiple transcript variants of this gene.
Form	25 mM Tris HCl, pH 7.3, 100 mM glycine, 10% glycerol.
Bio-activity	ELISA assay
Molecular Mass	92.8 kDa
AA Sequence	MAGLNCGVSIALLGVLLLGAARLPRGAEAFEIALPRESNITVLIKLGTPDLLAKPCYIVIS KRHITMLSI KSGERIVFTFSCQSPENHFVIEIQKNIDCMSGPCPFGEVQLQPSTSLLP TLNRTFIWDVKAHKSIGLELQ FSIPRLRQIGPGESCPDGVTHSISGRIDATVVRIGTFC SNGTVSRIKMQEGVKMALHLPWFHPRNVSGFS IANRSSIKRLCIIESVFEGEGSATL MSANYPEGFPEDELMTWQFVVPAPHLRASVSFLNFNLSNCERKEER VEYYIPGSTTN

 Tel: 1-631-559-9269 1-516-512-3133

 Email: info@creative-biomart.com  Fax: 1-631-938-8127

 45-1 Ramsey Road, Shirley, NY 11967, USA

PEVFKLEDKQPGNMAGNFNLSLQGCDQDAQSPGILRLQFQVLVQHPQNESNKIYVV
 DLS NERAMSLTIEPRPVKQSRKFVPGCFVCLESRTCSSNLTLSGSKHKISFLCDDL
 TRLWMNVEKTISCTDH RYCQRKSYSLQVPSDILHLPVELHDFSWKLLVPKDRLSLVL
 VPAQKLQQHTHEKPCNTSFSYLVASAIPS QDLYFGSFCPGGSIKIQVQKQNISVTLR
 TFAPSRQEASRQGLTVSFIPYFKEEGVFTVTPDTKSKVYLR TPNWDRGLPSLTSVS
 WNISVPRDQVACLTFKERSGVVCQTGRAFMIIQEQRTRAEEIFSLDEDVLPKPS FH
 HHSFWVNISNCSPTSGKQLDLLFSVTLTPRTVDLTVILIAAVGGGVLLLSALGLIICCVK
 KKKKKTNK GPAVGIYNGNINTEMPRQPKKFQKGRKDNDSHVYAVIEDTMVYGHLQ
 DSSGSFLQPEVDTYRPFQGTMG VCPPSPPTICSRAPTAKLATEEPPPRSPPESESE
 PYTFSHPNNGDVSSKDTDIPLLNTQEPMEPAETRTRPLEQKLISEEDLAANDILDYKD
 DDDKV

Purity > 80% as determined by SDS-PAGE and Coomassie blue staining.

Stability Stable for 12 months from the date of receipt of the product under proper storage and handling conditions. Avoid repeated freeze-thaw cycles.

Storage Store at -80 centigrade.

Concentration >50 ug/mL as determined by microplate BCA method.

Preparation Recombinant protein was captured through anti-DDK affinity column followed by conventional chromatography steps.

Protein Families ES Cell Differentiation/IPS, Transmembrane

Full Length Full L.

GENE INFORMATION

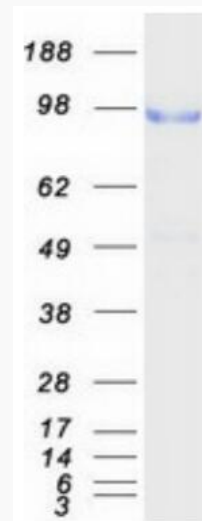
Gene Name CDCP1 CUB domain containing protein 1 [Homo sapiens (human)]

 Tel: 1-631-559-9269 1-516-512-3133

 Email: info@creative-biomart.com  Fax: 1-631-938-8127

 45-1 Ramsey Road, Shirley, NY 11967, USA

Official Symbol	CDCP1
Synonyms	CD318; TRASK; SIMA135
Gene ID	64866
mRNA Refseq	NM_022842.5
Protein Refseq	NP_073753.3
MIM	611735
UniProt ID	Q9H5V8



Coomassie blue staining of purified CDCP1 protein.

 Tel: 1-631-559-9269 1-516-512-3133

 Email: info@creative-biomart.com  Fax: 1-631-938-8127

 45-1 Ramsey Road, Shirley, NY 11967, USA