

Recombinant Human CDCP1 protein, His-tagged

Cat. No. CDCP1-526H Lot. No. (See product label)

SPECIFICATION

Product Overview	Recombinant Human CDCP1 protein(Q9H5V8)(30-667aa), fused with C-terminal His tag, was expressed in HEK293.
Species	Human
Source	HEK293
ProteinLength	30-667aa
Tag	C-His
Form	Lyophilized from a 0.2 µm filtered 20 mM Tris-HCl, 0.5 M NaCl, 6% Trehalose, pH 8.0
Bio-activity	Measured by its binding ability in a functional ELISA. Immobilized Human CDCP1 at 2 µg/mL can bind Anti-CDCP1 recombinant antibody, the EC50 is 0.2943-0.4429 ng/mL.
Molecular Mass	73.2 kDa
Endotoxin	Less than 1.0 EU/ug as determined by LAL method.
Purity	Greater than 95% as determined by SDS-PAGE.
Storage	Store at -20°C/-80°C upon receipt, aliquoting is necessary for mutiple use. Avoid repeated freeze-thaw cycles.

 Tel: 1-631-559-9269 1-516-512-3133

 Email: info@creative-biomart.com  Fax: 1-631-938-8127

 45-1 Ramsey Road, Shirley, NY 11967, USA

Reconstitution

We recommend that this vial be briefly centrifuged prior to opening to bring the contents to the bottom. Please reconstitute protein in deionized sterile water to a concentration of 0.1-1.0 mg/mL. We recommend to add 5-50% of glycerol (final concentration) and aliquot for long-term storage at -20°C/-80°C.

AA Sequence

```
FEIALPRESNITVLIKLGTPDLLAKPCYIVISKRHITMLSIKSGERIVFTFSCQSPENHFVI
EIQKNIDCMSGPCPFGEVQLQPSTSLPLNRTFIWDVKAHKSIGLELQFSIPRLRQIG
PGESCPDGVTHSISGRIDATVVRIGTFCSNGTVSRIKMQEGVKMALHLPWFHPRNVS
GFSIANRSSIKRLCIIESVFEGEGSATLMSANYPEGFPEDELMTWQFVPAHLRASVS
FLNFNLSNCERKEERVEYYIPGSTTNPEVFKLEDKQPGNMAGNFNLSLQGCDQDAQ
SPGILRLQFQVLVQHPQNESNKIYVVDLSNERAMSLTIEPRPVKQSRKFVPGCFVCL
ESRTCSSNLTLSGSKHKISFLCDDLTRLWMNVEKTISCTDHRYCQRKSYSLQVPSD
ILHLPVELHDFSWKLLVPKDRLSLVLPQAQKLQQHTHEKPCNTSFSYLVASAIPSQDL
YFGSFCPPGSSIKQIQVKQNISVTLRTFAPSFQQEASRQGLTVSFIPYFKEEGVFTVTP
DTKSKVYLRTPNWRGLPSLTSVSWNISVPRDQVACLTFKERSGVVCQTGRAFMII
QEQRTRAEEIFSLDEDVLPKPSFHHSFWVNISNCSPTSSGKQLDLLFSVTLTPRTVD
LT
```

GENE INFORMATION

Gene Name

CDCP1 CUB domain containing protein 1 [Homo sapiens]

Official Symbol

CDCP1

Synonyms

CDCP1; CUB domain containing protein 1; CUB domain-containing protein 1; CD318; SIMA135; membrane glycoprotein gp140; transmembrane and associated with src kinases; subtractive immunization M plus HEP3-associated 135 kDa protein; TRASK;

Gene ID

64866

 Tel: 1-631-559-9269 1-516-512-3133

 Email: info@creative-biomart.com  Fax: 1-631-938-8127

 45-1 Ramsey Road, Shirley, NY 11967, USA

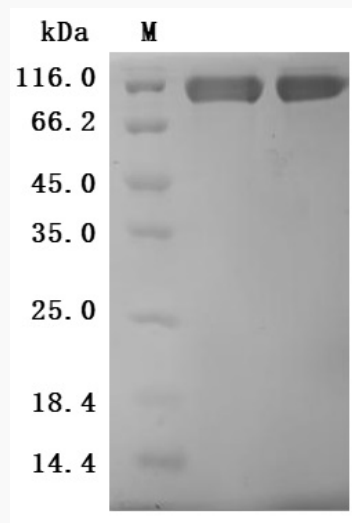
mRNA Refseq [NM_022842](#)

Protein Refseq [NP_073753](#)

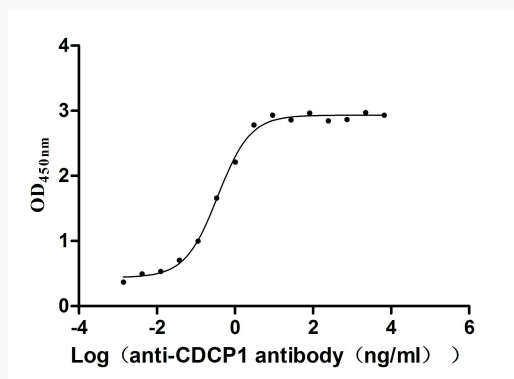
MIM [611735](#)

UniProt ID [Q9H5V8](#)

SDS-PAGE



Activity



Tel: 1-631-559-9269 1-516-512-3133

Email: info@creative-biomart.com Fax: 1-631-938-8127

45-1 Ramsey Road, Shirley, NY 11967, USA