

Recombinant Human CDCP2 Protein, Myc/DDK-tagged, C13 and N15-labeled

Cat. No. CDCP2-917H **Lot. No.** (See product label)

SPECIFICATION

Product Overview	CDCP2 MS Standard C13 and N15-labeled recombinant protein (NP_963840) with a C-terminal MYC/DDK tag, was expressed in HEK293 cells.
Species	Human
Source	HEK293
Description	CDCP2 (CUB Domain Containing Protein 2) is a Protein Coding gene. Diseases associated with CDCP2 include Brachial Plexus Neuritis and Bartter Syndrome, Type 3. An important paralog of this gene is CUBN.
Molecular Mass	48.6 kDa
AA Sequence	MLAEWGACLLLAVALLGPGLQAQAMEGVKCGGVLSAPSGNFSSPNFPRLYPYNTE CSWLIVVAEGSSVLLTFHAFDLEYHDTCSFDFLEIYNGASPKGNLLGRFCGKVPPP PFTSSWHVMSVIFHSDKHVASHGFSAGYQKDVCGGVLTGLSGVLTSPYEYNNYPN SMECHWVIRAAGPAHVKLVFVDFQVEGNEECTYDYVAVLGGPGPTRGHHYCGSTR PPTLVSLGHELQVVFKSDFNIGGRGFKAYYFSGECQEVYAMMRGNFSSPQYPSSYP NNIRCHWTIRLPPGYQVKVFFLDLDLEEPSLTKTCDFDHLAAFDGASEEAPLLGNW CGHHLPPPVTSSHNQLLLLLHTDRSTTRRGFSVAYIGGQLGCGSGSTEGEREALQP QSLQSPSSIPPVCPAPPMNGLLQLLLHWHPCPLSGPLRLDGTAPACFHYCRASFP SFTRTRPLEQKLISEEDLAANDILDYKDDDDKV
Purity	> 80% as determined by SDS-PAGE and Coomassie blue staining

 Tel: 1-631-559-9269 1-516-512-3133

 Email: info@creative-biomart.com  Fax: 1-631-938-8127

 45-1 Ramsey Road, Shirley, NY 11967, USA

Stability	Stable for 3 months from receipt of products under proper storage and handling conditions.
Storage	Store at -80 centigrade. Avoid repeated freeze-thaw cycles.
Concentration	50 µg/mL as determined by BCA
Storage Buffer	100 mM glycine, 25 mM Tris-HCl, pH 7.3.

GENE INFORMATION

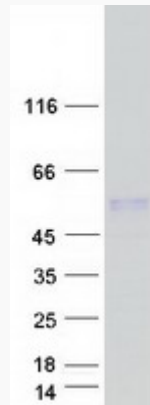
Gene Name	CDCP2 CUB domain containing protein 2 [Homo sapiens (human)]
Official Symbol	CDCP2
Synonyms	CDCP2; CUB domain containing protein 2; CUB domain-containing protein 2;
Gene ID	200008
mRNA Refseq	NM_201546
Protein Refseq	NP_963840
MIM	612320
UniProt ID	Q5VXM1

 Tel: 1-631-559-9269 1-516-512-3133

 Email: info@creative-biomart.com  Fax: 1-631-938-8127

 45-1 Ramsey Road, Shirley, NY 11967, USA

SDS-PAGE



 Tel: 1-631-559-9269 1-516-512-3133

 Email: info@creative-biomart.com  Fax: 1-631-938-8127

 45-1 Ramsey Road, Shirley, NY 11967, USA