

Recombinant Human CDH1 Protein, GST-Tagged

Cat. No. CDH1-0969H **Lot. No.** (See product label)

SPECIFICATION

Product Overview	Human CDH1 full-length ORF (ENSP00000261769, 1 a.a. - 882 a.a.) recombinant protein with GST-tag at N-terminal.
Species	Human
Source	Wheat Germ
Description	<p>This gene encodes a classical cadherin of the cadherin superfamily. Alternative splicing results in multiple transcript variants, at least one of which encodes a preproprotein that is proteolytically processed to generate the mature glycoprotein. This calcium-dependent cell-cell adhesion protein is comprised of five extracellular cadherin repeats, a transmembrane region and a highly conserved cytoplasmic tail. Mutations in this gene are correlated with gastric, breast, colorectal, thyroid and ovarian cancer. Loss of function of this gene is thought to contribute to cancer progression by increasing proliferation, invasion, and/or metastasis. The ectodomain of this protein mediates bacterial adhesion to mammalian cells and the cytoplasmic domain is required for internalization. This gene is present in a gene cluster with other members of the cadherin family on chromosome 16. [provided by RefSeq, Nov 2015]</p>
Molecular Mass	123.9 kDa
AA Sequence	<p>MGPWSRSLSALLLLLQVSSWLCQEPEPCHPGFDAESYFTVPRRHLEGRVLRV NFEDCTGRQRTAYFSLDTRFKVGTGDIVTKRPLRFHNPQIHFLVYAWDSTYRKFS KVTLNTVGHHRPPPHQASVSGIQAELLTFPNSSPGLRRQKRDWVIPPISCPENEKG</p>

 Tel: 1-631-559-9269 1-516-512-3133

 Email: info@creative-biomart.com  Fax: 1-631-938-8127

 45-1 Ramsey Road, Shirley, NY 11967, USA

PFPKNLVQIKSNKDKEGKVFYSITGQGADTPPVGVFIIERETGWLKVTEPLDRERIAT
 YTLFSHAVSSNGNAVEDPMEILITVTDQNDNKPEFTQEVFKGSMEGALPGTSVME
 VTATDADDDVNTYNAAIAYTILSQDPELPDKNMFTINRNTGVISVTTGLDRESFPTY
 TLVVQAADLQGEGLSTTATAVITVTDNDNPPIFNPPTYKQVPENEANVVITTLKVT
 DADAPNTPAWEAVYTILNDDGGQFVVTNPNVNDGILKTAKGLDFEAKQQYILHVAV
 TNVVPFEVSLTTSTATVTVDVLDVNEAPIFVPPEKRVEVSEDFGVGQEITSYTAQEPD
 TFMEQKITYRIWRDTANWLEINPDTGAISTRAELDREDFEHVKNSTYALIIATDNGSP
 VATGTGTLILLSDVNDNAPIPEPRTIFFCERNPKPQVINIIDADLPPNTSPFTAELTHG
 ASANWTIQYNDPTQESIILKPKMALEVGDYKINLKLMDNQNKDQVTTLEVSVCDCG
 AAGVCRKAQPVEAGLQIPAILGILGGILALLILLLLLLFLRRRAVVKEPLLPPEDDTRDN
 VYYYDEEGGGEDQDFDLSQLHRGLDARPEVTRNDVAPTLMSVPRYLPRPANPDEI
 GNFIDENLKAADTDPTAPPYDSSLVFDYEGSGSEAASSLNSESSEDKDQDYDYLNE
 WGNRFKKLADMYGGGEDD

Applications	Enzyme-linked Immunoabsorbent Assay Western Blot (Recombinant protein) Antibody Production Protein Array
Storage	Store at -80 centigrade. Aliquot to avoid repeated freezing and thawing.
Storage Buffer	50 mM Tris-HCl, 10 mM reduced Glutathione, pH=8.0 in the elution buffer.

GENE INFORMATION

Gene Name	CDH1 cadherin 1, type 1, E-cadherin (epithelial) [Homo sapiens]
Official Symbol	CDH1
Synonyms	CDH1; cadherin 1, type 1, E-cadherin (epithelial); UVO; cadherin-1; CD324; E

Cadherin; uvomorulin; CAM 120/80; E-Cadherin; cell-CAM 120/80; epithelial cadherin; cadherin 1, E-cadherin (epithelial); calcium-dependent adhesion protein, epithelial; CDHE; ECAD; LCAM; Arc-1;

Gene ID 999

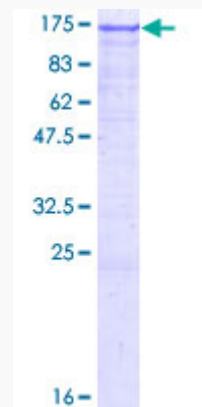
mRNA Refseq NM_004360

Protein Refseq NP_004351

MIM 192090

UniProt ID P12830

**Quality Control
Testing**



12.5% SDS-PAGE Stained with Coomassie Blue.

 Tel: 1-631-559-9269 1-516-512-3133

 Email: info@creative-biomart.com  Fax: 1-631-938-8127

 45-1 Ramsey Road, Shirley, NY 11967, USA