

Recombinant Full Length Human CDH1 Protein, C-Flag-tagged

Cat. No. CDH1-1010HFL **Lot. No.** (See product label)

SPECIFICATION

Product Overview	Recombinant Full Length Human CDH1 Protein, fused to Flag-tag at C-terminus, was expressed in Mammalian cells.
Species	Human
Source	Mammalian Cells
Description	<p>This gene encodes a classical cadherin of the cadherin superfamily. Alternative splicing results in multiple transcript variants, at least one of which encodes a preproprotein that is proteolytically processed to generate the mature glycoprotein. This calcium-dependent cell-cell adhesion protein is comprised of five extracellular cadherin repeats, a transmembrane region and a highly conserved cytoplasmic tail. Mutations in this gene are correlated with gastric, breast, colorectal, thyroid and ovarian cancer. Loss of function of this gene is thought to contribute to cancer progression by increasing proliferation, invasion, and/or metastasis. The ectodomain of this protein mediates bacterial adhesion to mammalian cells and the cytoplasmic domain is required for internalization. This gene is present in a gene cluster with other members of the cadherin family on chromosome 16.</p>
Form	25 mM Tris HCl, pH 7.3, 100 mM glycine, 10% glycerol.
Molecular Mass	94.8 kDa
AA Sequence	MGPWSRSL SALLLLLQVSSWLCQEPEPCHPGFDAESYFTVPRRHLEGRVLRV NFEDCTGRQRTAYFS LDTRFKVGTGDGIVTKRPLRFHNPQIHFLVYAWDSTYRKFS

 Tel: 1-631-559-9269 1-516-512-3133

 Email: info@creative-biomart.com  Fax: 1-631-938-8127

 45-1 Ramsey Road, Shirley, NY 11967, USA

TKVTLNTVGHHHRPPPHQASVSGIQAELL TFPNSSPGLRRQKRDWVIPPISCPENE
 KGPFKPNLVQIKSNKDKEGKVFYSITGQGADTPPVGVFIIERE TGWLKVTEPLDRERI
 ATYTLFSHAVSSNGNAVEDPMEILITVTDQNDNKPEFTQEVEFKGSVMEGALPGTS V
 MEVTATDADDDVNTYNAAIAYTILSQDPELDPKNMFTINRNTGVISVTTGLDRESFP
 TYTLVVQAADL QGEGLSTTATAVITVTDNDNPPIFNPTTYKQVPENEANVVITTLK
 VTDADAPNTPAWEAVYILNDDG GQFVVTTNPVNNDGILKTAKGLDFEAKQQYILHV
 AVTNVVPFEVSLTTSTATVTVDVLDVNEAPIFVPPE KRVEVSEDFGVGQEITSYTAQ
 EPDTFMEQKITYRIWRDTANWLEINPDTGAISTRAELDREDFEHVKNST YTALIIATD
 NGSPVATGTGTLILLSDVNDNAPIPEPRTIFFCERNPKPQVINIIDADLPPNTSPFTAE
 L THGASANWTIQYNDPTQESIILKPKMALEVGDYKINLKLMDNQNKDQVTTLEVSVC
 DCEGAAGVCRKAQP VEAGLQIPAILGILGGILALLILLLLLLFLRRRAVVKEPLLPED
 DTRDNVYYYDEEGGGEEDQDFDLS QLHRGLDARPEVTRNDVAPTLMSVPRYLPRP
 ANPDEIGNFIDENLKAADTDPTAPPYDSSLVFDYEGSGS
 EAASLSSLNSESDDKQDYDYLNEWGNRFKKLADMYGGGEDDTRTRPLEQKLISEE
 DLAANDILDYKDDDDKV

Purity	> 80% as determined by SDS-PAGE and Coomassie blue staining.
Stability	Stable for 12 months from the date of receipt of the product under proper storage and handling conditions. Avoid repeated freeze-thaw cycles.
Storage	Store at -80 centigrade.
Concentration	>50 ug/mL as determined by microplate BCA method.
Preparation	Recombinant protein was captured through anti-DDK affinity column followed by conventional chromatography steps.
Protein Families	Druggable Genome, ES Cell Differentiation/IPS, Transmembrane

 Tel: 1-631-559-9269 1-516-512-3133

 Email: info@creative-biomart.com  Fax: 1-631-938-8127

 45-1 Ramsey Road, Shirley, NY 11967, USA

Protein Pathways Adherens junction, Bladder cancer, Cell adhesion molecules (CAMs), Endometrial cancer, Melanoma, Pathogenic Escherichia coli infection, Pathways in cancer, Thyroid cancer

Full Length Full L.

GENE INFORMATION

Gene Name CDH1 cadherin 1 [Homo sapiens (human)]

Official Symbol CDH1

Synonyms UVO; CDHE; ECAD; LCAM; Arc-1; BCDS1; CD324

Gene ID 999

mRNA Refseq NM_004360.5

Protein Refseq NP_004351.1

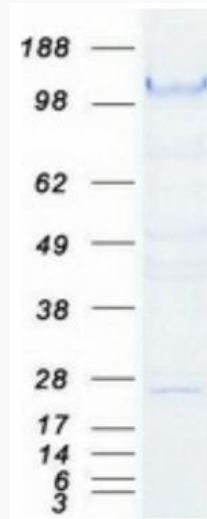
MIM 192090

UniProt ID P12830

 Tel: 1-631-559-9269 1-516-512-3133

 Email: info@creative-biomart.com  Fax: 1-631-938-8127

 45-1 Ramsey Road, Shirley, NY 11967, USA



Coomassie blue staining of purified CDH1 protein.

 Tel: 1-631-559-9269 1-516-512-3133

 Email: info@creative-biomart.com  Fax: 1-631-938-8127

 45-1 Ramsey Road, Shirley, NY 11967, USA