

## Recombinant Human CDH1 Protein, His-tagged

Cat. No. CDH1-198H Lot. No. (See product label)

### SPECIFICATION

<b>Product Overview</b>	Recombinant Human CDH1 Protein(NP_004351.1) (Met1-Ala709) was expressed in Insect Cells with a polyhistidine tag at the C-terminus.
<b>Species</b>	Human
<b>Source</b>	Insect Cells
<b>ProteinLength</b>	1-709 aa
<b>Form</b>	Lyophilized from sterile 20 mM Tris, 500 mM NaCl, 10 % glycerol, pH 7.4.
<b>Molecular Mass</b>	The recombinant human CDH1 consists 698 amino acids and predicts a molecular mass of 77.2 kDa.
<b>Endotoxin</b>	< 1 EU/g as determined by LAL test.
<b>Purity</b>	> 90 % as determined by SDS-PAGE
<b>Storage</b>	Store it under sterile conditions at -20°C to -80°C upon receiving. Recommend to aliquot the protein into smaller quantities for optimal storage. Avoid repeated freeze-thaw cycles.
<b>Reconstitution</b>	It is recommended that sterile water be added to the vial to prepare a stock solution of 0.2 ug/ul. Centrifuge the vial at 4°C before opening to recover the entire contents.

 Tel: 1-631-559-9269 1-516-512-3133

 Email: [info@creative-biomart.com](mailto:info@creative-biomart.com)  Fax: 1-631-938-8127

 45-1 Ramsey Road, Shirley, NY 11967, USA

## GENE INFORMATION

**Gene Name** CDH1 cadherin 1, type 1, E-cadherin (epithelial) [ Homo sapiens ]

**Official Symbol** CDH1

**Synonyms** CDH1; cadherin 1, type 1, E-cadherin (epithelial); UVO; cadherin-1; CD324; E Cadherin; uvomorulin; CAM 120/80; E-Cadherin; cell-CAM 120/80; epithelial cadherin; cadherin 1, E-cadherin (epithelial); calcium-dependent adhesion protein, epithelial; CDHE; ECAD; LCAM; Arc-1;

**Gene ID** 999

**mRNA Refseq** NM\_004360

**Protein Refseq** NP\_004351

**MIM** 192090

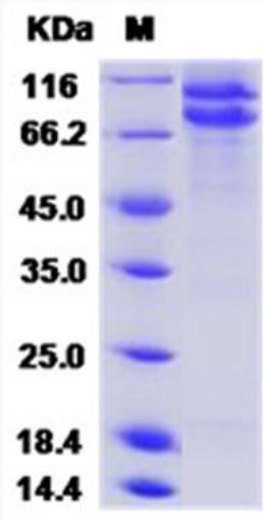
**UniProt ID** P12830

 Tel: 1-631-559-9269 1-516-512-3133

 Email: [info@creative-biomart.com](mailto:info@creative-biomart.com)  Fax: 1-631-938-8127

 45-1 Ramsey Road, Shirley, NY 11967, USA

SDS-PAGE



 Tel: 1-631-559-9269 1-516-512-3133

 Email: [info@creative-biomart.com](mailto:info@creative-biomart.com)  Fax: 1-631-938-8127

 45-1 Ramsey Road, Shirley, NY 11967, USA