

Active Recombinant Human CDH1 protein, His-tagged

Cat. No. CDH1-207H Lot. No. (See product label)

SPECIFICATION

| | |
|-------------------------|---|
| Product Overview | Active Recombinant Human CDH1 protein(P12830)(155~707 aa), fused with N-terminal His tag, was expressed in HEK293. |
| Species | Human |
| Source | HEK293 |
| ProteinLength | 155-707 aa |
| Form | Lyophilized from sterile PBS, pH7.4, containing 0.01% SKL, 1mM DTT, 5% Trehalose and Proclin300. |
| Bio-activity | E-Cadherin, also known as Uvomorulin in the mouse and rat, is a 120 kDa member of the Cadherin family of cell surface glycoproteins that mediate cell adhesion. Human E-Cadherin shares 81% amino acid sequence identity with the rat and mouse proteins. It is a single-pass transmembrane protein that mediates calcium-dependent epithelial cell adhesion. As E-cadherin has the function of cell adhesion, we measure the activity of recombinant human E-cadherin by the ability of the immobilized protein to support the adhesion of MCF7 human breast cancer cells. When 5 x 10 ⁴ cells/well are added to different concentrations of recombinat human E-cadherin coated plates, cells will adhere after 2 hour incubation at 37°C. The adhesion of MCF7 after 2 hour incubation at 37°C observed by inverted microscope was shown. Cell adherent was in a dose dependent manner, the result was shown, the EC50 was 0.19 ug/ml. |
| Molecular Mass | 62.0kDa |

 Tel: 1-631-559-9269 1-516-512-3133

 Email: info@creative-biomart.com  Fax: 1-631-938-8127

 45-1 Ramsey Road, Shirley, NY 11967, USA

| | |
|-----------------------|--|
| Endotoxin | <1.0EU per 1µg (determined by the LAL method). |
| Purity | > 95% as determined by SDS-PAGE. |
| Storage | Avoid repeated freeze/thaw cycles. Store at -20°C for 12 months. Aliquot and store at -80°C for 12 months. |
| Reconstitution | Reconstitute in 10mM PBS (pH7.4) to a concentration of 0.1-1.0 mg/mL. Do not vortex. |

GENE INFORMATION

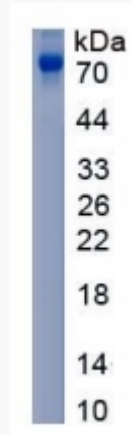
| | |
|------------------------|--|
| Gene Name | CDH1 cadherin 1, type 1, E-cadherin (epithelial) [Homo sapiens] |
| Official Symbol | CDH1 |
| Synonyms | CDH1; cadherin 1, type 1, E-cadherin (epithelial); UVO; cadherin-1; CD324; E Cadherin; uvomorulin; CAM 120/80; E-Cadherin; cell-CAM 120/80; epithelial cadherin; cadherin 1, E-cadherin (epithelial); calcium-dependent adhesion protein, epithelial; CDHE; ECAD; LCAM; Arc-1; |
| Gene ID | 999 |
| mRNA Refseq | NM_004360 |
| Protein Refseq | NP_004351 |
| MIM | 192090 |
| UniProt ID | P12830 |

 Tel: 1-631-559-9269 1-516-512-3133

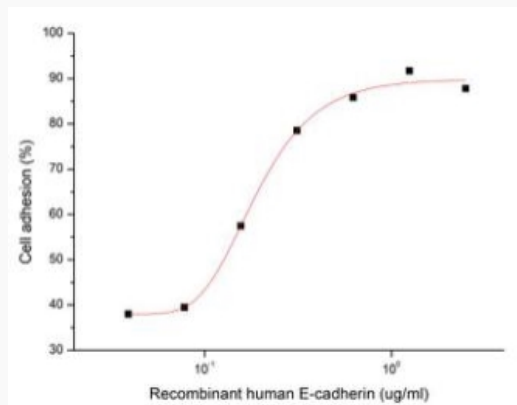
 Email: info@creative-biomart.com  Fax: 1-631-938-8127


 45-1 Ramsey Road, Shirley, NY 11967, USA

SDS-PAGE




Activity



 Tel: 1-631-559-9269 1-516-512-3133

 Email: info@creative-biomart.com  Fax: 1-631-938-8127

 45-1 Ramsey Road, Shirley, NY 11967, USA