

Active Recombinant Human CDH1, Fc tagged

Cat. No. CDH1-274H Lot. No. (See product label)

SPECIFICATION

Product Overview	Active Recombinant Human CDH1(P12830)(Met1-Ile707) was expressed in HEK293 with the Fc region of human IgG1 at the C-terminus.
Species	Human
Source	HEK293
ProteinLength	1-707 aa
Form	Lyophilized from sterile PBS, pH 7.4.
Bio-activity	Measured by the ability of the immobilized protein to support the adhesion of MCF-7 human breast adenocarcinoma cells. When cells are added to E-Cad coated plates (5 µg/mL, 100 µL/well), approximately 33% will adhere specifically after 90 minutes at 37 °C.
Molecular Mass	The recombinant human E-Cad/Fc is a disulfide-linked homodimer. The reduced monomer comprises 791 amino acids and has a predicted molecular mass of 87.1 kDa. The apparent molecular mass of the protein is approximately 116-126 kDa in SDS-PAGE under reducing conditions.
Endotoxin	< 1 EU/g as determined by LAL test.
Purity	> 90 % as determined by SDS-PAGE

 Tel: 1-631-559-9269 1-516-512-3133

 Email: info@creative-biomart.com  Fax: 1-631-938-8127

 45-1 Ramsey Road, Shirley, NY 11967, USA

Storage Store it under sterile conditions at -20°C to -80°C upon receiving. Recommend to aliquot the protein into smaller quantities for optimal storage. Avoid repeated freeze-thaw cycles.

Reconstitution It is recommended that sterile water be added to the vial to prepare a stock solution of 0.2 ug/ul. Centrifuge the vial at 4°C before opening to recover the entire contents.

GENE INFORMATION

Gene Name [CDH1 cadherin 1, type 1, E-cadherin \(epithelial\) \[Homo sapiens \]](#)

Official Symbol [CDH1](#)

Synonyms CDH1; cadherin 1, type 1, E-cadherin (epithelial); UVO; cadherin-1; CD324; E Cadherin; uvomorulin; CAM 120/80; E-Cadherin; cell-CAM 120/80; epithelial cadherin; cadherin 1, E-cadherin (epithelial); calcium-dependent adhesion protein, epithelial; CDHE; ECAD; LCAM; Arc-1;

Gene ID [999](#)

mRNA Refseq [NM_004360](#)


Protein Refseq [NP_004351](#)

MIM [192090](#)

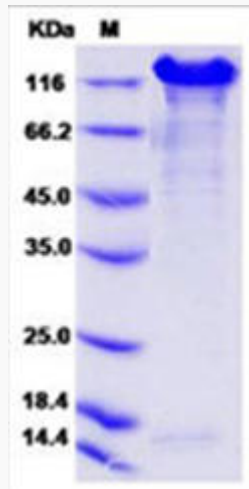
UniProt ID [P12830](#)


 Tel: 1-631-559-9269 1-516-512-3133

 Email: info@creative-biomart.com  Fax: 1-631-938-8127


 45-1 Ramsey Road, Shirley, NY 11967, USA

SDS-PAGE



 Tel: 1-631-559-9269 1-516-512-3133

 Email: info@creative-biomart.com  Fax: 1-631-938-8127

 45-1 Ramsey Road, Shirley, NY 11967, USA